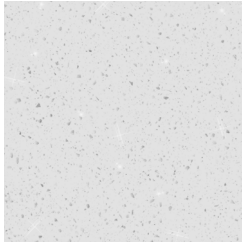


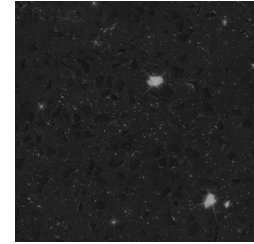
COLLABORATIVE SERIES EPOXY TERRAZZO TILE



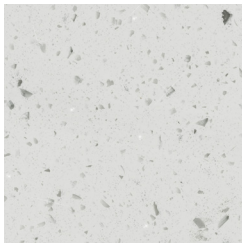
TZE01
SNOWBOUND



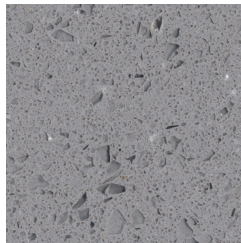
TZE02
MESQUITE



TZE03
ONYX



TZE04
WHITE DIAMOND



TZE05
NICKEL



TZE06
ICE MIST

Due to the natural variances in aggregate materials and camera limitations, the color characteristics of our manufactured tiles have been digitally altered to highlight their true affect. Your monitor or printer may not be an accurate representation of the actual production color or finish. **Please request a free sample to experience the true effect of our product.**

| PROPERTY | ADVANCED TESTING VALUE | TEST METHOD |
|---------------------------|--|-------------|
| Compression Strength | > 13,000 PSI avg. | ASTM C140 |
| Absorption | < 5% avg. | ASTM C140 |
| Flexural Strength | > 1,000 PSI avg. | ASTM C293 |
| C373 Water Absorption | Passes (Semi-Vitreous) | - |
| C482 Bond Strength | > 300 PSI | - |
| C485 Warpage Edge | +/- .001% or .002 in. | - |
| C485 Warpage Diagonal | +/- .003% or .010 in. | - |
| C499 Nominal Size | Range of .029 in. | - |
| C499 Thickness | Range of .029 in. | - |
| Dynamic DCOF | Passes at Factory | - |
| ANSI A173.1 Section 9.6.1 | Wet Dynamic Coefficient of Friction (DCOF) | - |
| Avg. Polished Finish | 0.46 | - |
| Avg. Honed Finish | .054 | - |

STANDARD SIZE



Ships in 4 business days, subject to availability

CUSTOM SIZES

12" sq. 36" sq.
16" sq. 48" sq.
12" x 24" 48" x 96"
24" x 48"

Thickness: 9/16"

Call for availability and lead times.

Testing based on 12" x 12" x 1/2" tile

CALL FOR FURTHER DETAILS & PRICING.

P: 800.388.8728 | E: wtile@wausautile.com | WAUSAUTILE.COM