

REVISIONS

| NAME | DATE | NOTES |
|------|------|-------|
| 1    | ---  | ---   |
| 2    | ---  | ---   |
| 3    | ---  | ---   |
| 4    | ---  | ---   |
| 5    | ---  | ---   |
| 6    | ---  | ---   |
| 7    | ---  | ---   |
| 8    | ---  | ---   |

**CONFIDENTIAL INFORMATION**  
 THESE DRAWING, SPECIFICATIONS AND OTHER INFORMATION AND DOCUMENTS ACCOMPANYING THEM ARE THE CONFIDENTIAL AND PROPRIETARY PROPERTY OF WAUSAU TILE, INC. THE DRAWINGS THEMSELVES SHALL BELONG TO THE OWNER FOR USE ONLY ON THE PROJECT. ANY ADDITIONAL USE SHALL REQUIRE THE PRIOR WRITTEN APPROVAL OF WAUSAU TILE, INC. THE PROPRIETARY INFORMATION CONTAINED WITHIN THE DRAWINGS AND THE DOCUMENTS IS AND SHALL REMAIN THE SOLE PROPERTY OF WAUSAU TILE, INC

JOB NAME

WAUSAU, WI

UNLESS OTHERWISE SPECIFIED  
 DIMENSIONS ARE IN INCHES  
 FRACTIONS ± 1/8"

DRAWN BY: TAS

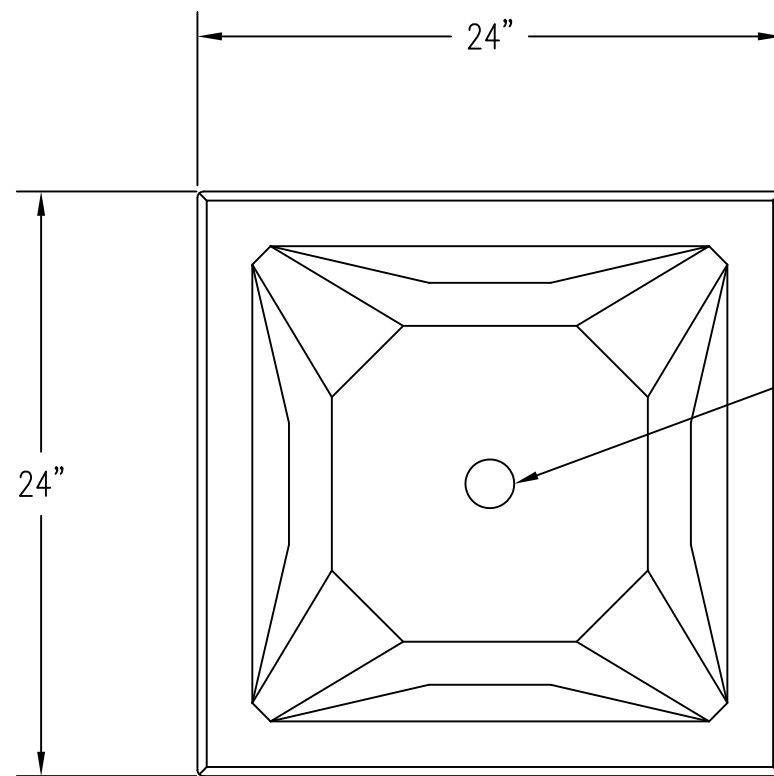
DATE: 6/28/17

CO NUMBER: ?

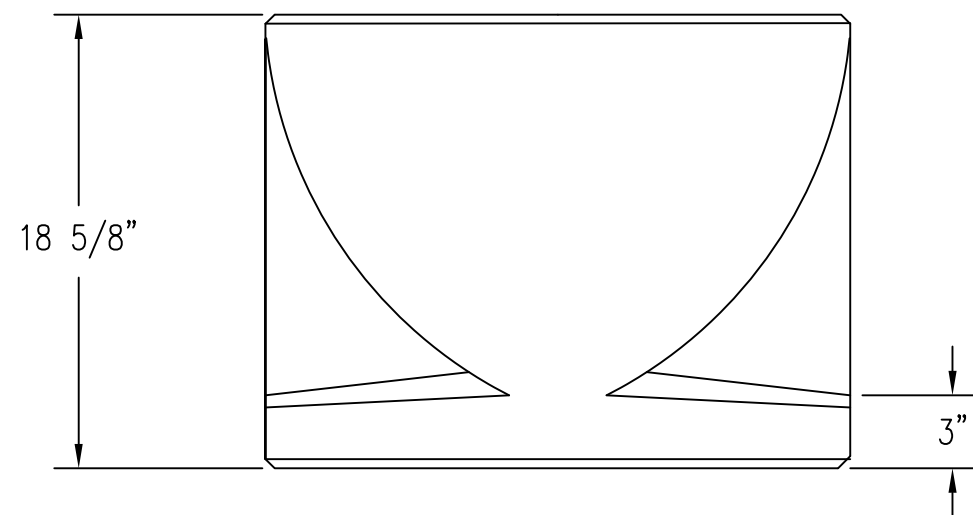
WEIGHT: 570 LBS

SHEET NO.

WS4051



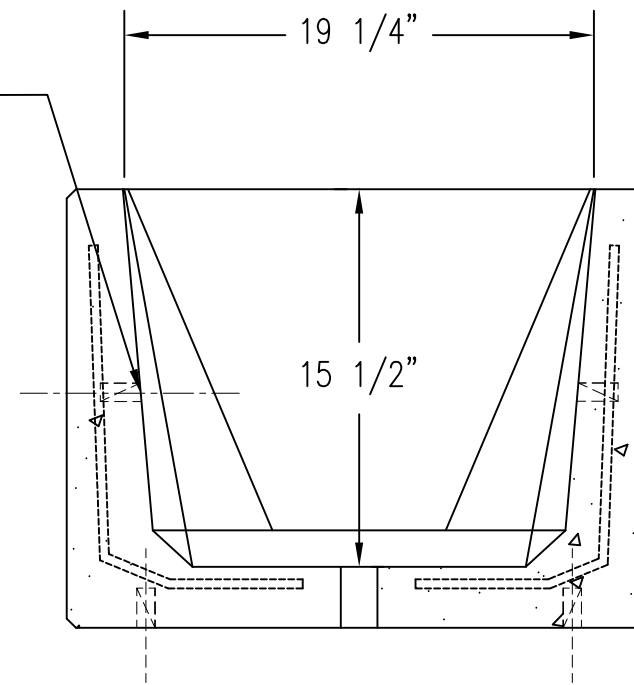
**1 TOP VIEW**  
 Scale: 1/8" = 1"



**2 ELEVATION VIEW**  
 Scale: 1/8" = 1"

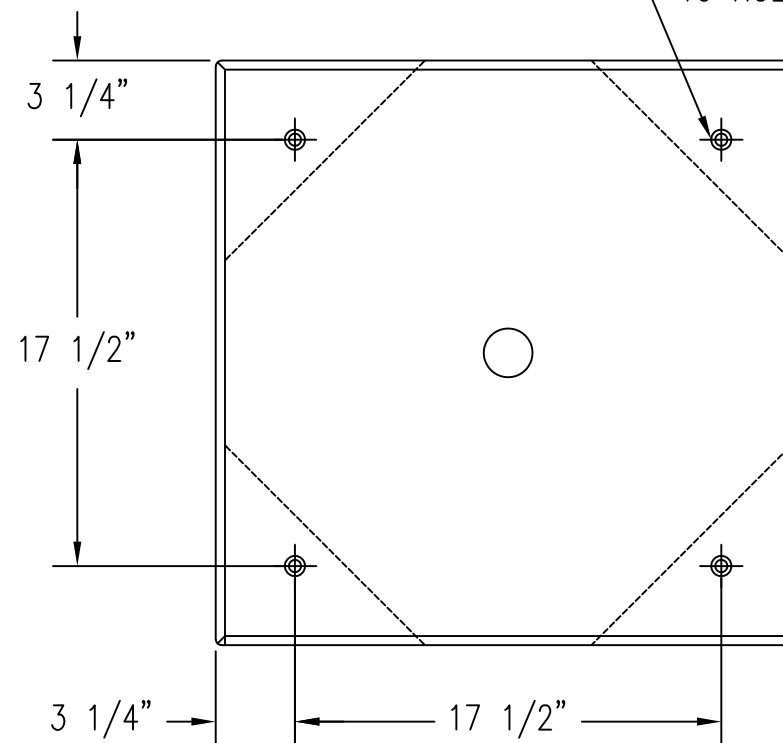
(2) 5/8"-11 UNC  
 INSERTS FOR LIFTING

1 1/2" DIA. DRAIN HOLE



**3 SECTION VIEW**  
 Scale: 1/8" = 1"

(4) 1/2" UNC S/S INSERTS  
 TO HOLD RE-BAR



**4 BOTTOM VIEW**  
 Scale: 1/8" = 1"