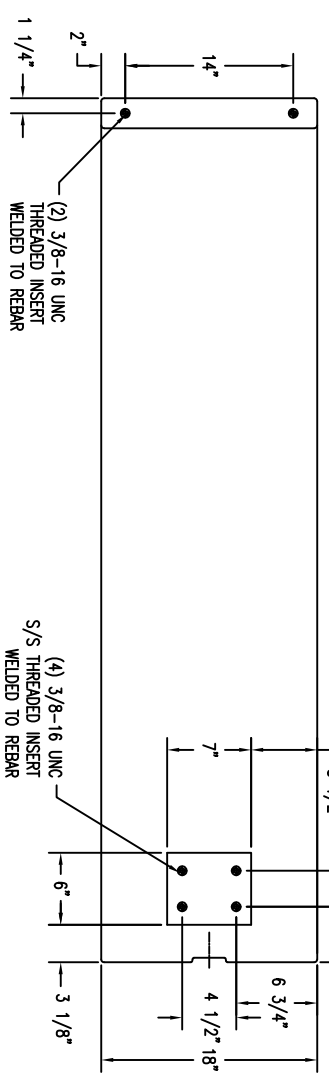
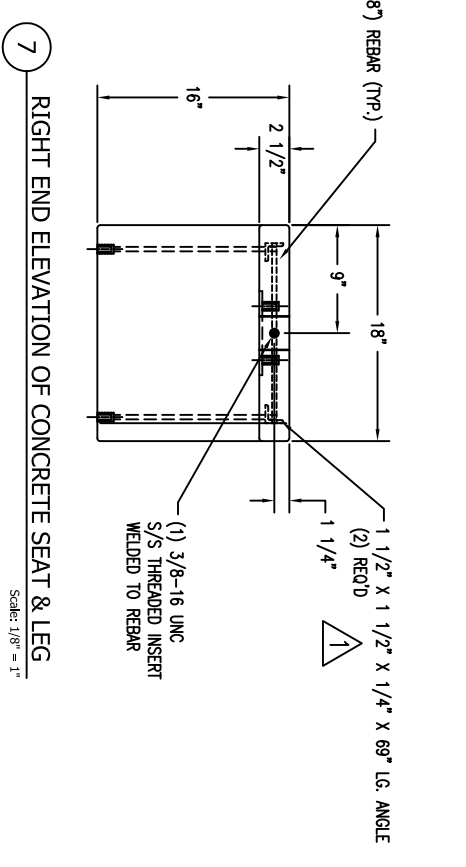
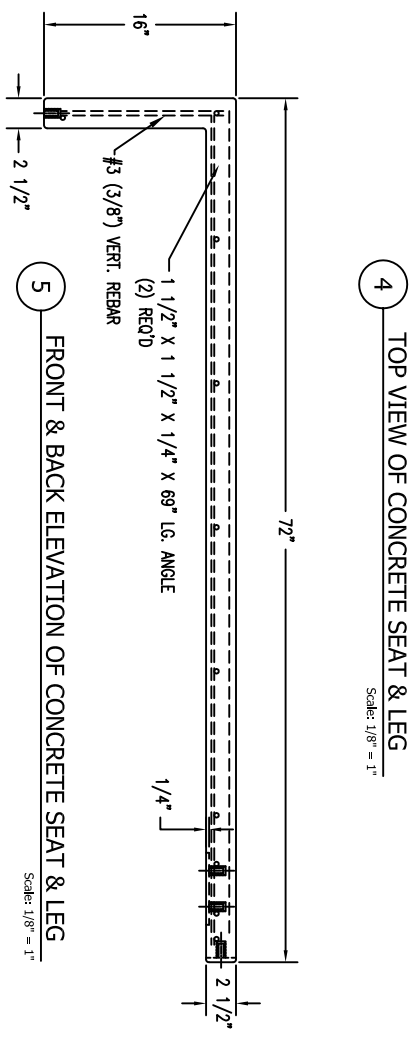
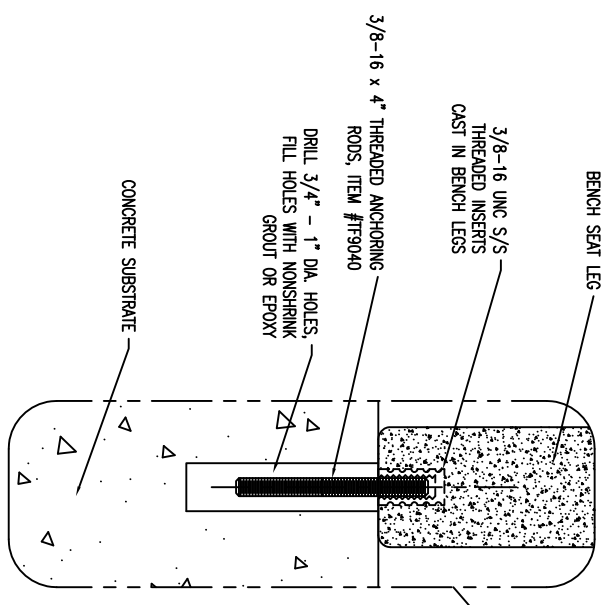
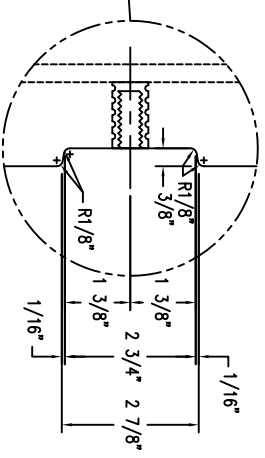
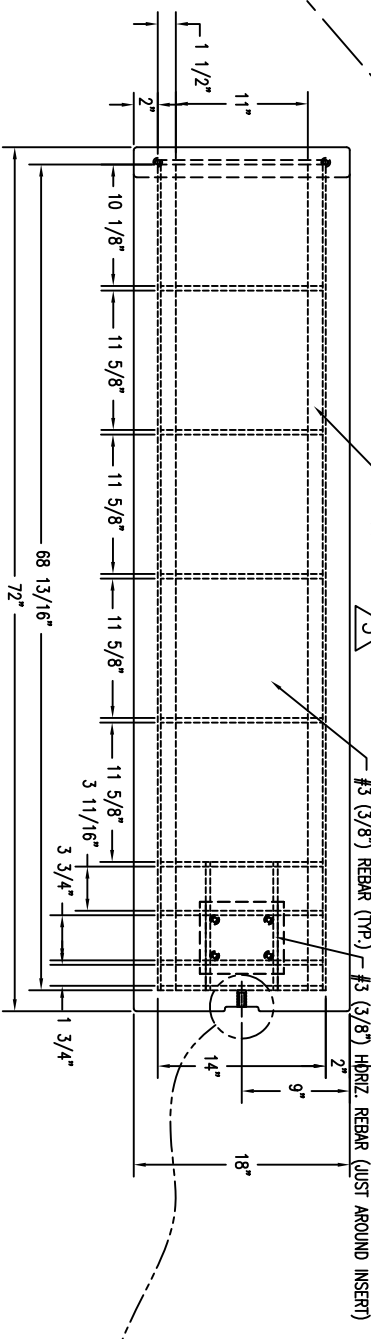
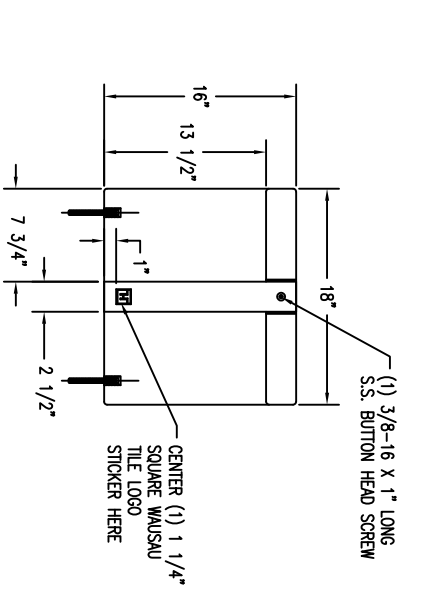
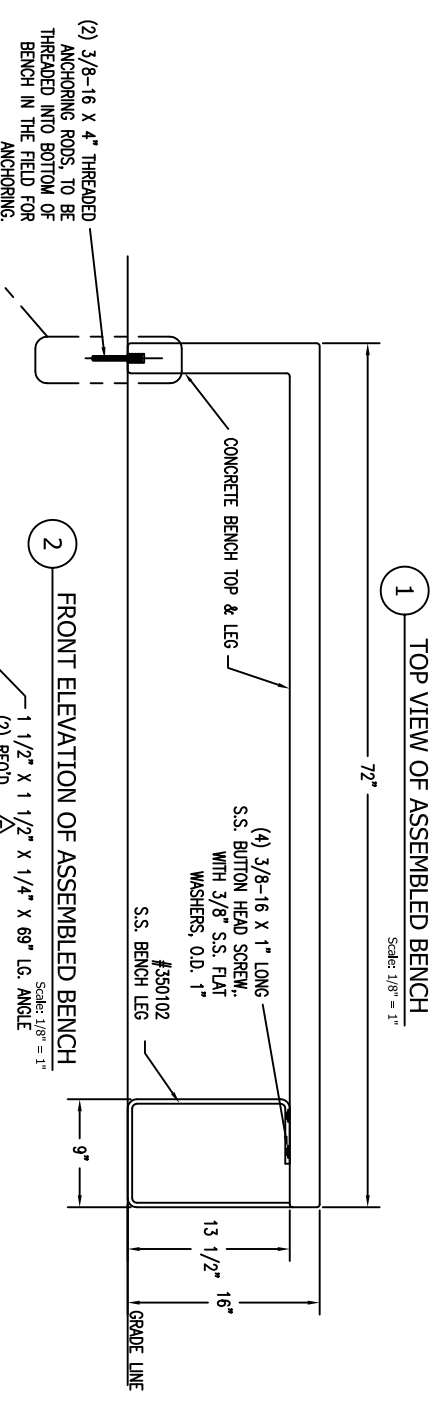
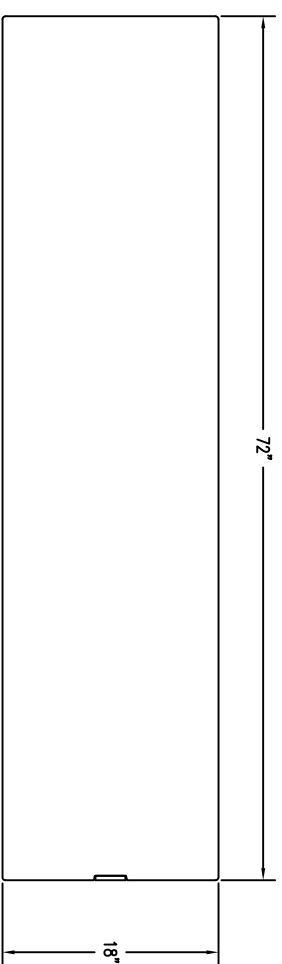


PARTS SCHEDULE FOR WS-306 BENCH			
ITEM #	DESCRIPTION	QTY	PART NO.
1	CONCRETE BENCH SEAT WITH 1 LEG	1	350102
2	STAINLESS STEEL LEG	1	1173815
3	3/8X16 - 1" LONG S.S. BUTTON HEAD SCREW	5	1173815
4	3/8" S.S. FLAT WASHER, O.D. 1"	4	1171018
5	3/8-16 X 4" LONG ANCHORING RODS	2	TF9040



NOTE: ALL CORNERS TO HAVE 1/4" RADIUS UNLESS NOTED OTHERWISE.

NOTE: LOCATE INSERTS WITH JIG TO ENSURE FIT UP WITH STAINLESS STEEL LEG.

REV	DESCRIPTION	DATE	NAME
5	ADDED ANGLE REINFORCEMENT	6/17/11	JPZ
4		12/08/10	MJS
3		8/10/10	MJS
2		7/29/10	PJW
1		1/25/10	PJW

WAUSAU TILE		P.O. BOX 1520 WAUSAU, WISCONSIN 54402-1520 800/286-8728	
DESIGNER	M. JOHNSON	E-MAIL: TITELMANS@WAUSAUTILE.COM	
DRAWN BY	M. JOHNSON	WEB SITE: WWW.WAUSAUTILE.COM	
TITLE			
JOB NO.			
SCALE	AS NOTED	DATE	10/27/09
UNLESS OTHERWISE SPECIFIED DIMENSIONS ARE IN INCHES FRACTIONS 1/8"		FINISH OPTIONS	
		DWG. NO.	WS-306