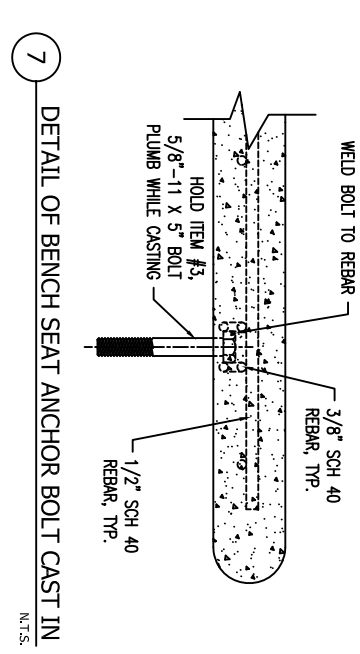
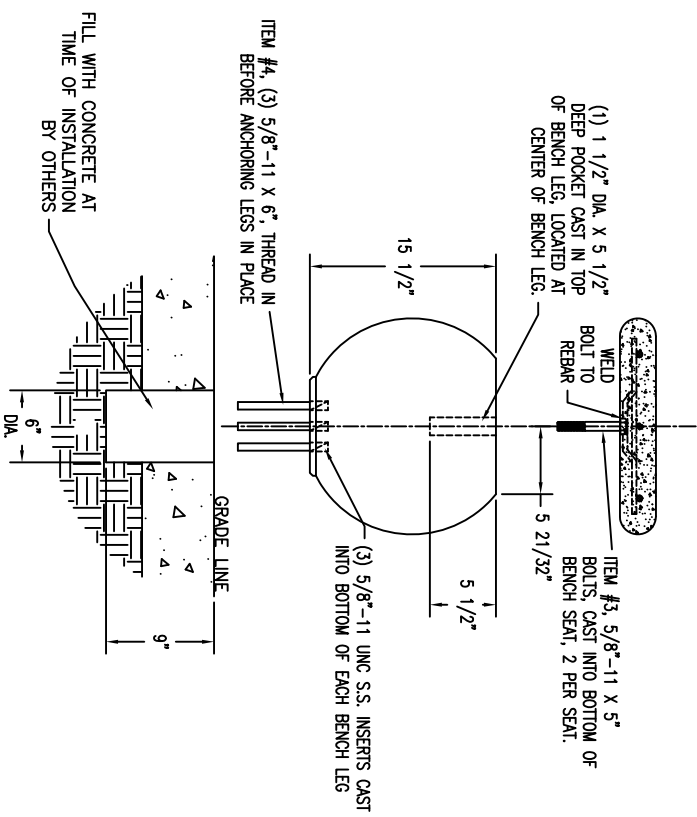
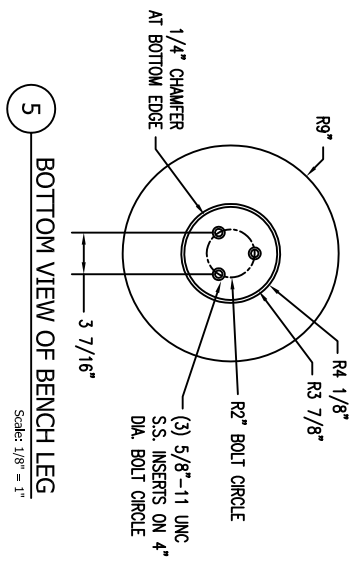
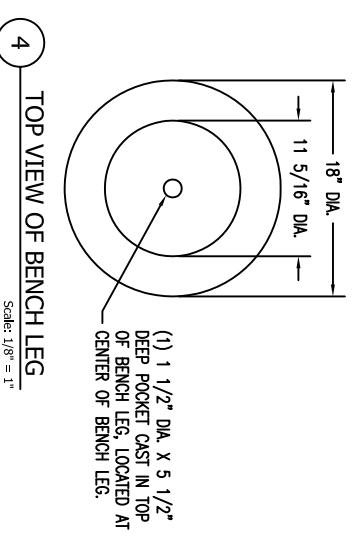
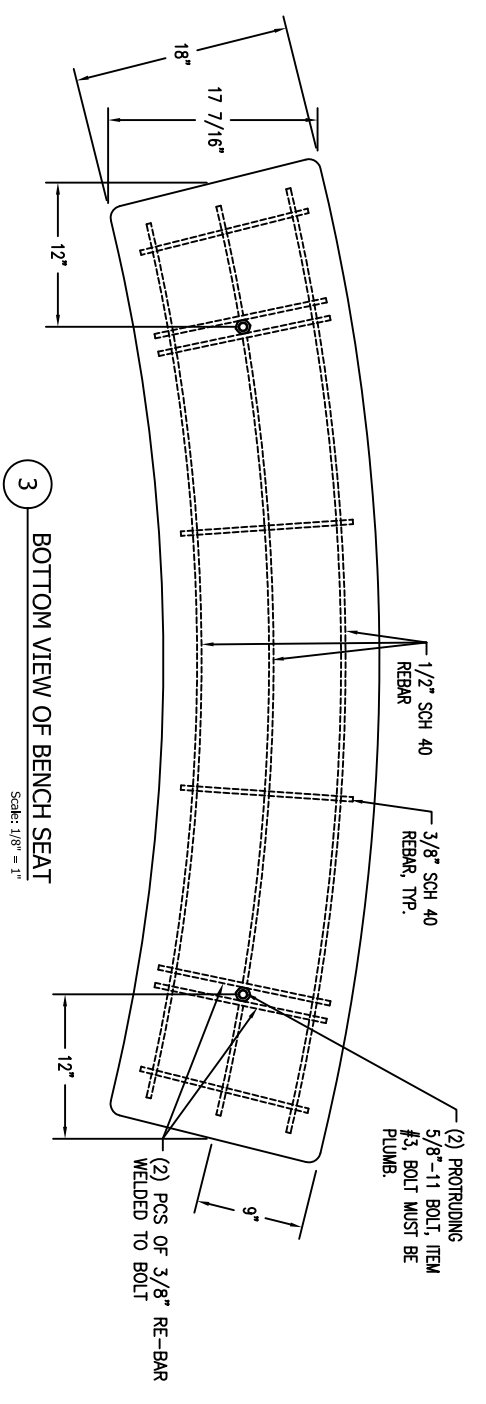
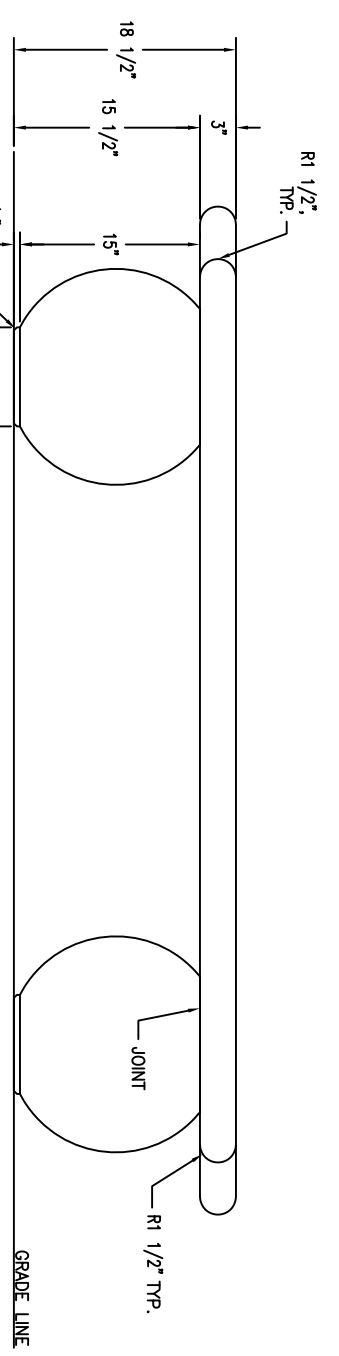
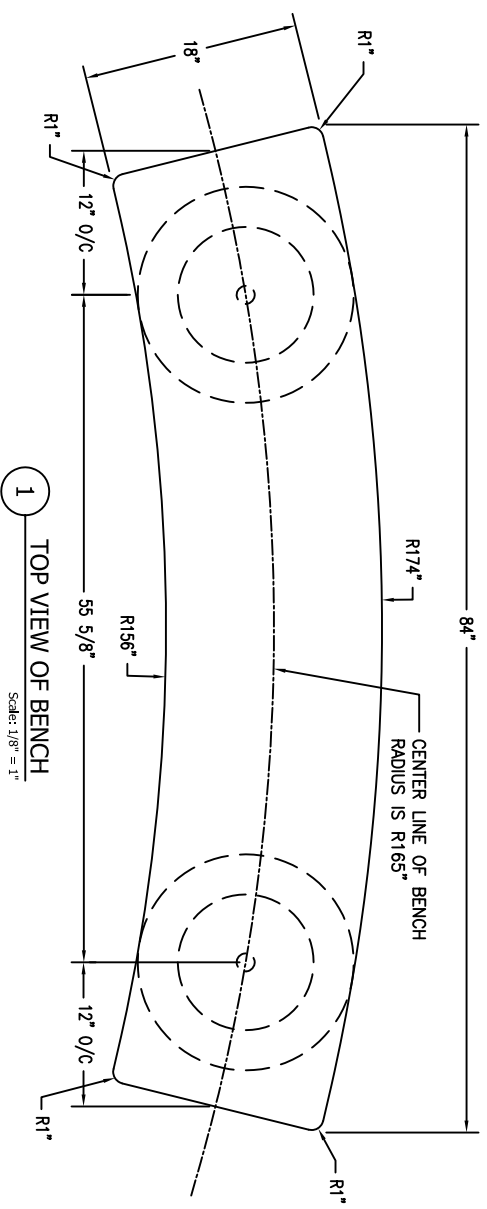


ITEM NO.	DESCRIPTION	PART NO.	QTY.
1	CONCRETE BENCH SEAT		1
2	CONCRETE BENCH LEGS 18" DIA.		2
3	5/8"-11 X 5" UNC GAL. BOLTS		2
4	5/8"-11 X 6" UNC S.S. RODS		6



INSTALLATION: SET BENCH LEGS AT CENTER LINE LOCATION FOR FOR 7'-0" BENCHES. CHECK CENTER TO CENTER OF 1 1/2" POCKETS TO MAKE SURE IT IS CORRECT. LEAVE CURE FOR 24 HOURS. FILL 1 1/2" POCKET WITH EPOXY. CAREFULLY PLACE BENCH SEAT WITH STUDS DOWN ONTO BENCH LEGS. REMOVE ANY EXCESS EPOXY. INSTALLATION IS BY CUSTOMER.

NOTE: COLOR NOT DETERMINED AT TIME OF DWG. BENCH SEAT CAST SMOOTH AND STAINED. BENCH LEGS CAST WEATHERSTONE.

WEIGHT OF BENCH SEAT = 330 LBS
WEIGHT OF BENCH LEGS = 280 LBS, EACH
TOTAL WEIGHT OF UNIT = 890 LBS

CONFIDENTIAL INFORMATION
THESE DRAWINGS, SPECIFICATIONS AND THE INFORMATION AND DOCUMENTS ACCOMPANYING THEM ARE THE CONFIDENTIAL AND PROPRIETARY PROPERTY OF WAUSAU TILE, INC. THE DRAWINGS THEMSELVES SHALL BELONG TO THE OWNER FOR USE ON THIS PROJECT. ANY ADDITIONAL USE SHALL REQUIRE THE PRIOR WRITTEN APPROVAL OF WAUSAU TILE, INC. THE PROPRIETARY INFORMATION CONTAINED WITHIN THE DRAWINGS AND THE DOCUMENTS IS AND SHALL REMAIN THE SOLE PROPERTY OF WAUSAU TILE, INC.

WAUSAU TILE SITE FURNISHINGS					
REVISIONS			DRAWN BY: R.J.H.		
NO.	DATE	BY	NO.	DATE	BY
1	11/25/09	P.A.M.	4		
2			5		
3			6		

JOB	LOCATION	MATERIAL
WAUSAU TILE SITE FURNISHINGS		CONCRETE

NO.	DATE	BY	NO.	DATE	BY
1	11/25/09	P.A.M.	4		
2			5		
3			6		

JOB	LOCATION	MATERIAL
WAUSAU TILE SITE FURNISHINGS		CONCRETE

NO.	DATE	BY	NO.	DATE	BY
1	11/25/09	P.A.M.	4		
2			5		
3			6		