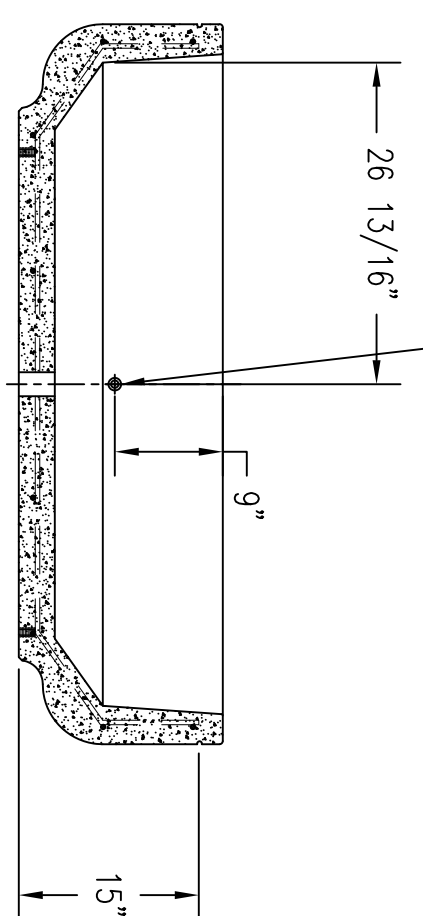
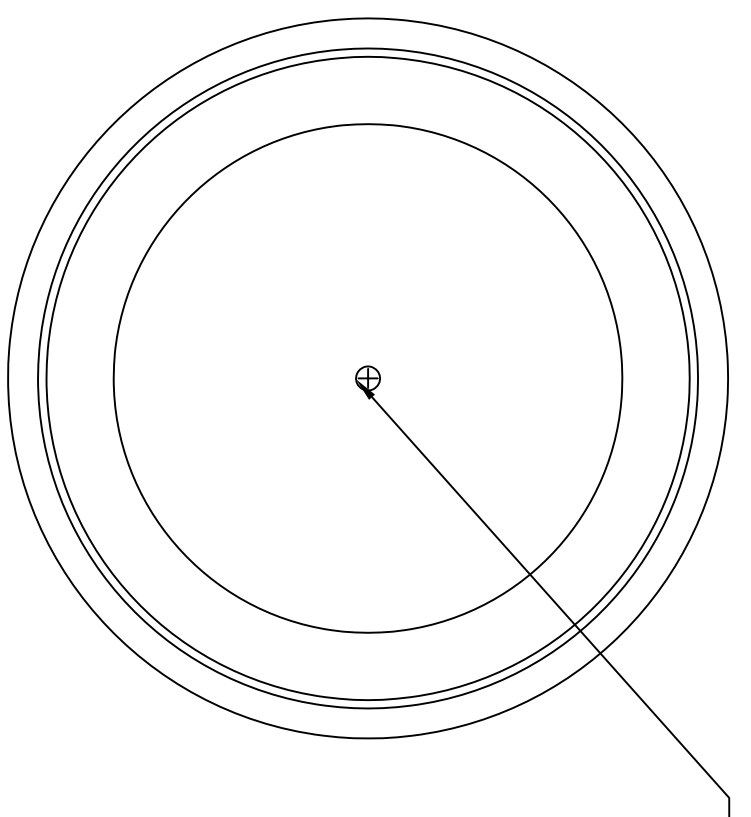


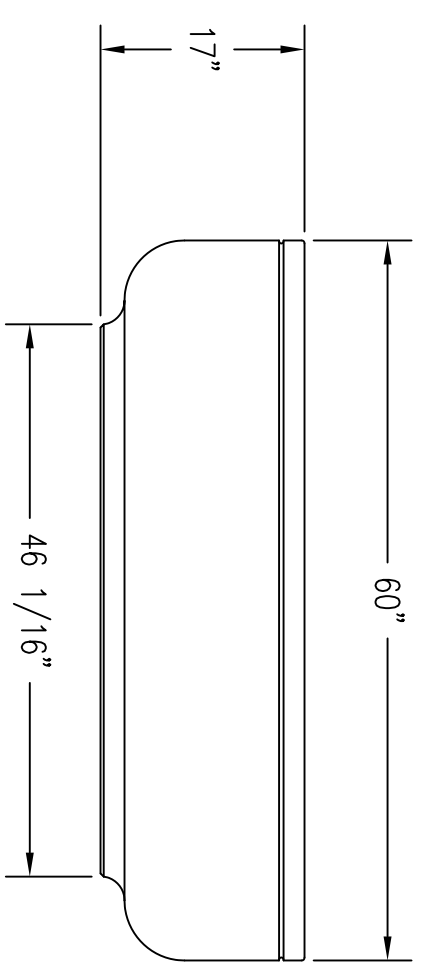
(4) 5/8-11 UNC S/S LIFTING INSERTS  
 NOTE: LIFTING INSERTS ARE TO BE USED ONLY WHEN THE PLANTER IS EMPTY



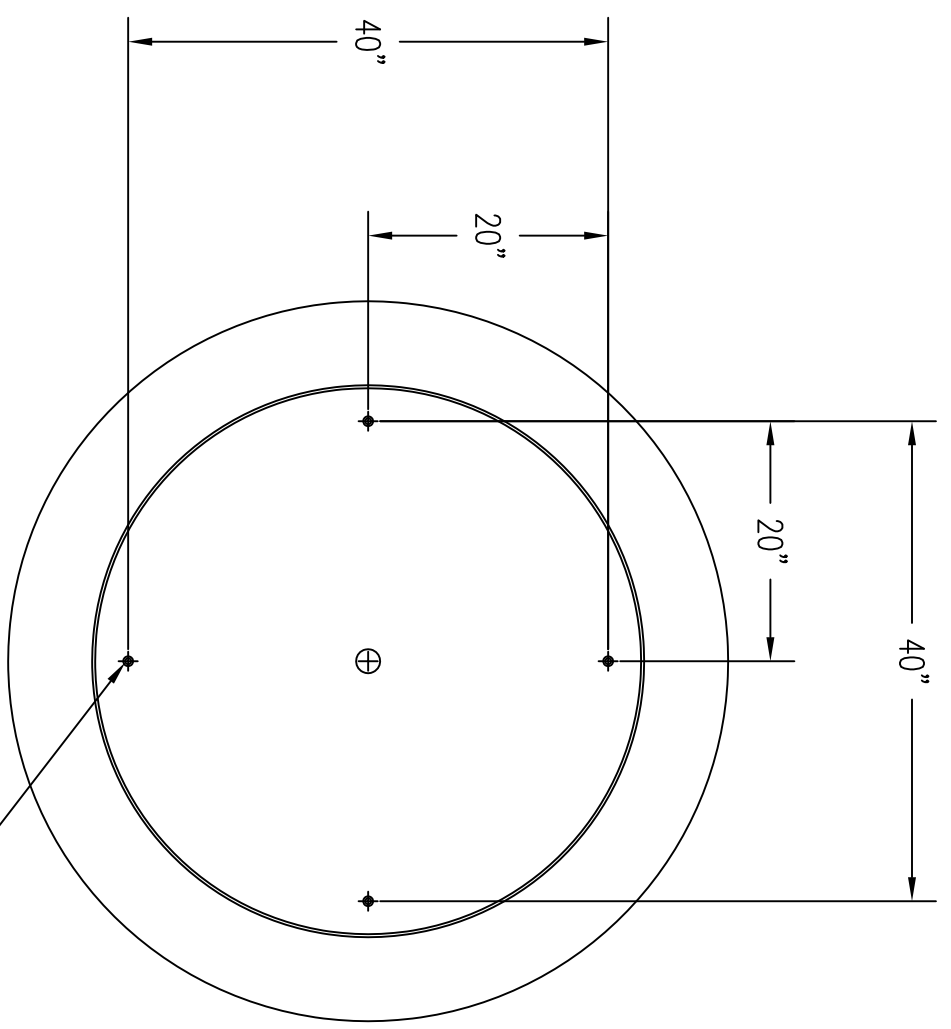
4 CROSS SECTION



1 TOP VIEW



2 ELEVATION VIEW



3 BOTTOM VIEW

(4) 1/2-13 UNC S/S THREADED INSERTS

REVISIONS		
NAME	DATE	NOTES
1	---	---
2	---	---
3	---	---
4	---	---
5	---	---
6	---	---
7	---	---
8	---	---

CONFIDENTIAL INFORMATION  
 THESE DRAWINGS, SPECIFICATIONS AND OTHER INFORMATION AND DOCUMENTS ACCOMPANYING THEM ARE THE CONFIDENTIAL AND PROPRIETARY PROPERTY OF WAUSAU TILE, INC. THE DRAWINGS THEMSELVES SHALL BELONG TO THE OWNER FOR USE ONLY ON THE PROJECT. ANY ADDITIONAL USE SHALL REQUIRE THE PRIOR WRITTEN APPROVAL OF WAUSAU TILE, INC. THE PROPRIETARY INFORMATION CONTAINED WITHIN THE DRAWINGS AND THE DOCUMENTS IS AND SHALL REMAIN THE SOLE PROPERTY OF WAUSAU TILE, INC.

JOB NAME  
 ADDRESS  
 CITY, STATE ZIP

UNLESS OTHERWISE SPECIFIED DIMENSIONS ARE IN INCHES FRACTIONS ±1/8"

DRAWN BY: SK  
 DATE: 7/7/15  
 CO NUMBER: ?  
 WEIGHT: 1,450 LBS

PRODUCT NO.  
**TF 4125**

SIGN BELOW IF DRAWINGS ARE APPROVED W/ MARKED CHANGES  
 APPROVED: \_\_\_\_\_  
 DATE: \_\_\_\_\_  
 (SIGNATURE ABOVE ILLUSTRATES ACCEPTANCE OF DIMENSIONS SHOWN.)