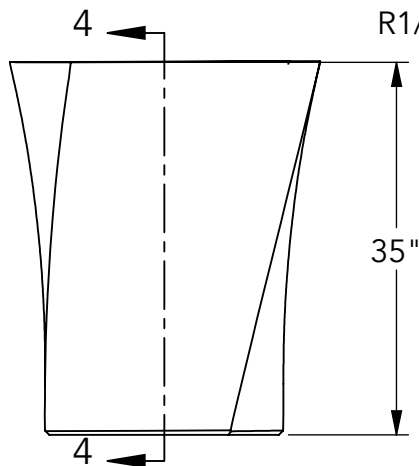
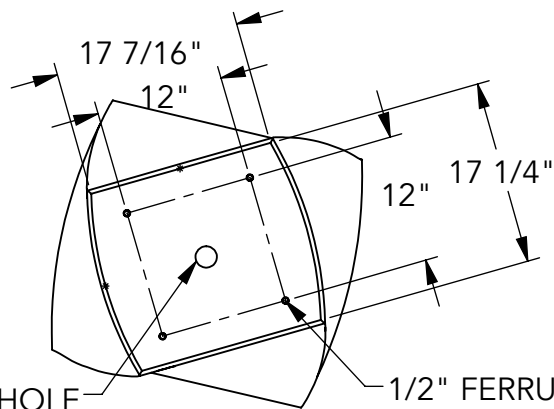


① TOP VIEW



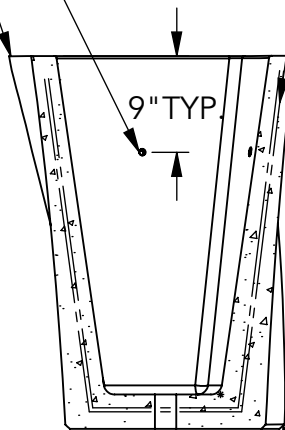
② FRONT VIEW



③ BOTTOM VIEW

5/8" THIN SLAB
INSERTS; TYP.

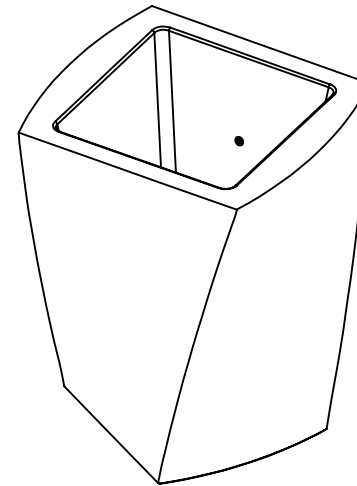
R1/8" TYP.



④ SECTION

3/8" NON COATED REBAR; TYP.

3/8" CHAMFER



⑤ ISO



WAUSAU TILE

P.O. BOX 1520, WAUSAU, WI 54402-1520
800-388-8728
EMAIL: WTILE@WAUSAUTILE.COM
WEBSITE: WWW.WAUSAUTILE.COM

REVISIONS

	BY	DATE	NOTE
1	-		-
2	-		-
3	-		-
4	-		-
5			

CONFIDENTIAL INFORMATION
THESE DRAWINGS, SPECIFICATIONS AND OTHER
INFORMATION AND DOCUMENTS ACCOMPANYING
THEM ARE THE CONFIDENTIAL AND PROPRIETARY
PROPERTY OF WAUSAU TILE, INC. THE DRAWINGS
THEMSELVES SHALL BELONG TO THE OWNER FOR USE
ONLY ON THE PROJECT. ANY ADDITIONAL USE SHALL
REQUIRE THE PRIOR WRITTEN APPROVAL OF WAUSAU
TILE, INC. THE PROPRIETARY INFORMATION
CONTAINED WITHIN THE DRAWINGS AND THE
DOCUMENTS IS AND SHALL REMAIN THE SOLE
PROPERTY OF WAUSAU TILE, INC.

UNLESS OTHERWISE SPECIFIED
DIMENSIONS SHOWN ARE
ROUNDED TO THE CLOSEST
FRACTION $\pm 1/16"$

DRAWING SCALE: NOT TO SCALE

FABRICATION TOLERANCE: $\pm 1/8"$

**TWIST PLANTER 24"
X 24" X 35"**

DRAWN BY: SKD DATE: 2/26/2020

CO NUMBER: -

WEIGHT: 815 LBS

PRODUCT NUMBER:

TF4008