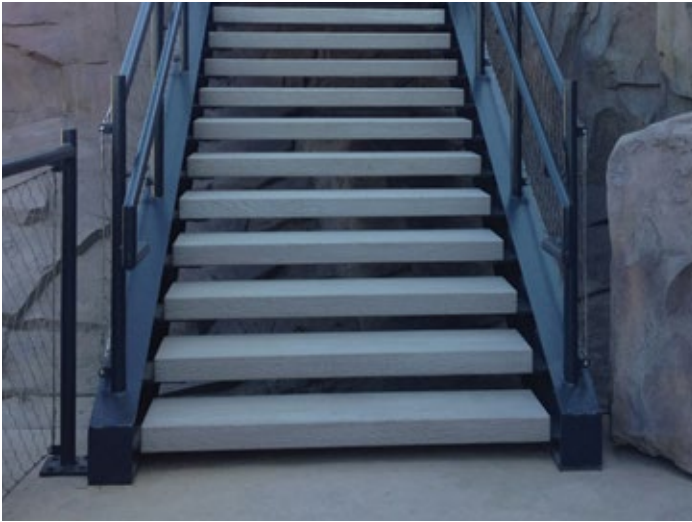
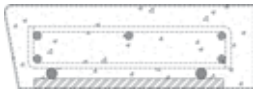


SELF-SUPPORTED TREAD AND RISERS

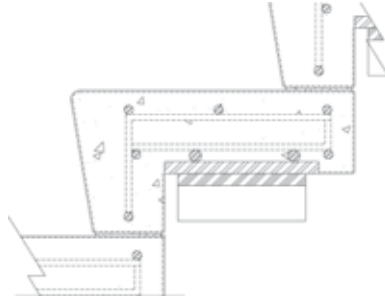


Wausau Tile's self-supporting treads have a 4" minimum thickness and can span from stringer to stringer with weld plates. Treads can be radial or straight and can have tapered ends per your design. Engineering is available.

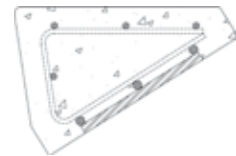
Standard color options include Weatherstone, Light Grind, Ground & Polished and Acid Wash and can be viewed at WausauTile.com.



**C60 SELF-SUPPORTING
FLAT TREAD**



**C70 SELF-SUPPORTING
TREAD & RISER**



**TEARDROP SELF-
SUPPORTING**

CALL FOR FURTHER DETAILS & PRICING.

P: 800.388.8728 | E: wtile@wausautile.com | WAUSAUTILE.COM

SELF-SUPPORTED TREAD AND RISERS

PROPERTY	ADVANCED TESTING VALUE	TEST METHOD
Compression Strength	Wausau Tile standard is 5000 PSI at 28 days.	ASTM C39
Water Absorption	Wausau Tile standard is less than 6%.	ASTM C642
Flexural Strength	Non-Standard	ASTM C78 (3rd party test: American Engineering)
C373 Water Absorption	Not-Applicable	
C482 Bond Strength	Not-Applicable	
C485 Warpage Edge	Tolerance of +/- 1/8"	100% Visual inspection of product, Straight edge confirmation as needed.
C485 Warpage Diagonal	Tolerance of +/- 1/8"	100% Visual inspection of product, Straight edge confirmation as needed.
C499 Nominal Size	Tolerance of +/- 1/8"	100% Inspection, Measurements verified against fabrication drawings.
C499 Thickness	Tolerance of +/- 1/8"	100% Inspection, Measurements verified against fabrication drawings.
Dynamic DCOF	Non-Standard, As specified for walking surfaces only.	ANSI 326.32017 (3RD PARTY: TCNA)
ANSI A173.1 Section 9.6.1	Not-Applicable (Tile only)	
Avg. Polished Finish	100% Visual Inspection	Visually compare product to control sample
Avg. Honed Finish	100% Visual Inspection	Visually compare product to control sample
Freeze/Thaw	Non-Standard	ASTM C666 (3rd Party, American Engineering)
Center Load	Not-Applicable (Pavers only)	

CALL FOR FURTHER DETAILS & PRICING.

P: 800.388.8728 | E: wtile@wausautile.com | WAUSAUTILE.COM