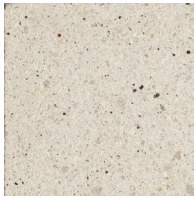
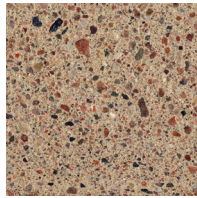


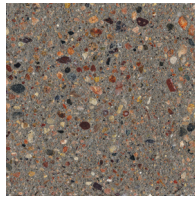
# RIVER THIN PAVERS



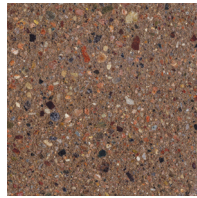
LP-10  
White Sand



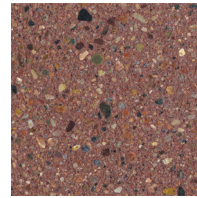
LP-11  
Tan Creek



LP-12  
Gray Bank



LP-13  
Brook Brown



LP-14  
Red River



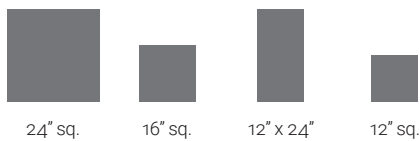
LP-15  
Black Silt

*Due to the natural variances in aggregate materials, the color characteristics of manufactured pavers may differ slightly from the color swatches pictured. Your monitor or printer may not be an accurate representation of the actual production color or finish.*

*Thinset/Mortar set installations only.*

PROPERTY	ADVANCED TESTING VALUE	TEST METHOD
Compressive Strength	> 9,500 PSI avg. with no individual unit less than 8,500 PSI	ASTM C 140
Water Absorption	< 5%	ASTM C 140
Flexural Strength	> 800 PSI avg.	ASTM C 293-14
Freeze/Thaw	Passes Freeze Thaw	ASTM C 1262

*Testing based on 2' x 2' x 2" paver.*



## STANDARD SIZES

All pavers available in 1" thickness. In addition to these standard sizes, each Wausau Tile paver series is available in a variety of standard and custom plank-style paver sizes.

Check [WausauTile.com](http://WausauTile.com) or call your sales rep for more details.

**CALL FOR FURTHER DETAILS & PRICING.**

P: 800.388.8728 | E: [wtile@wausautile.com](mailto:wtile@wausautile.com) | [WAUSAUTILE.COM](http://WAUSAUTILE.COM)