



WAUSAU TILE

P.O. BOX 1520, WAUSAU, WI 54402-1520
800-388-8728
EMAIL: WTILE@WAUSAUTILE.COM
WEBSITE: WWW.WAUSAUTILE.COM

REVISIONS

	BY	DATE	NOTE
1	-		-
2	-		-
3	-		-
4	-		-
5			

CONFIDENTIAL INFORMATION
THESE DRAWINGS, SPECIFICATIONS AND OTHER INFORMATION AND DOCUMENTS ACCOMPANYING THEM ARE THE CONFIDENTIAL AND PROPRIETARY PROPERTY OF WAUSAU TILE, INC. THE DRAWINGS THEMSELVES SHALL BELONG TO THE OWNER FOR USE ONLY ON THE PROJECT. ANY ADDITIONAL USE SHALL REQUIRE THE PRIOR WRITTEN APPROVAL OF WAUSAU TILE, INC. THE PROPRIETARY INFORMATION CONTAINED WITHIN THE DRAWINGS AND THE DOCUMENTS IS AND SHALL REMAIN THE SOLE PROPERTY OF WAUSAU TILE, INC.

UNLESS OTHERWISE SPECIFIED DIMENSIONS SHOWN ARE ROUNDED TO THE CLOSEST FRACTION ± 1/16"

DRAWING SCALE: NOT TO SCALE

FABRICATION TOLERANCE: ± 1/8"

CUSTOMER SIGNATURE REQUIRED

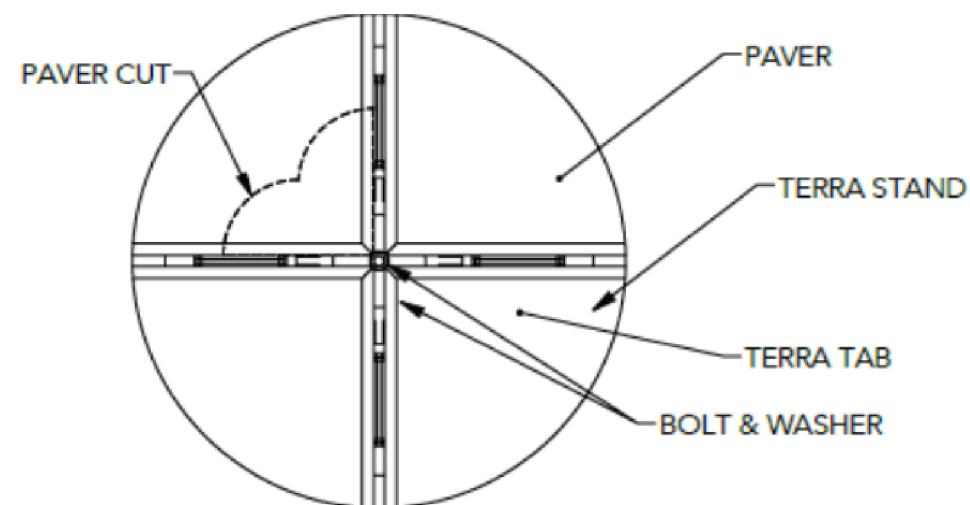
APPROVED: _____

DATE: _____

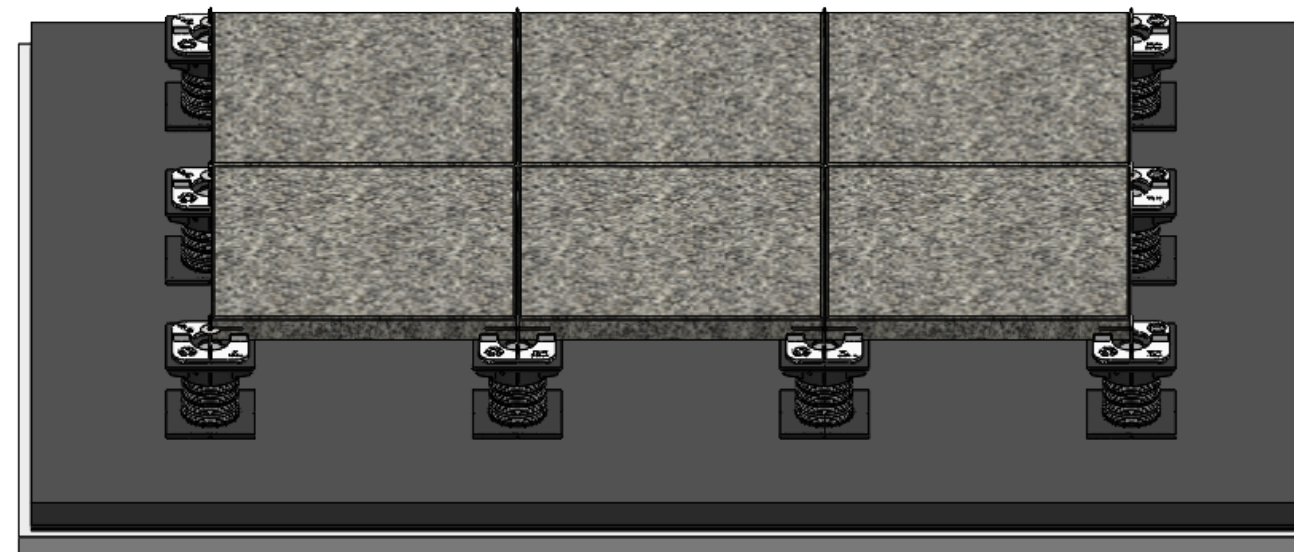
(SIGNATURE ABOVE ILLUSTRATES YOU HAVE REVIEWED ALL ASPECTS OF THE DESIGN FOR ACCURACY AND COMPLIANCE WITH YOUR JOB REQUIREMENTS AND APPROVE FABRICATION AS REPRESENTED WITHIN THESE DRAWINGS)

DRAWN BY: _____ DATE: 2/5/2021

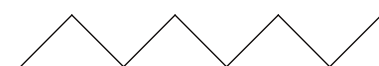
PRODUCT NUMBER:
SBS & XPS



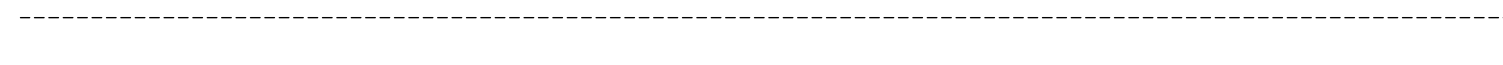
PEDESTAL NEEDS TO BE CENTERED FOR PROPER INSTALLATION



INSULATION: MIN 1.5 INCH SOPRA XPS OR DUPONT STYROFOAM HIGH LOAD 60 OR PLAZAMATE ADHERED WITH DUOTACK 365 ADHESIVE, 8" DIAMETER SPOTS 12 INCH O.C. GRID



DUOTACK 365 ADHESIVE, 8" DIAMETER SPOTS 12" O.C. GRID



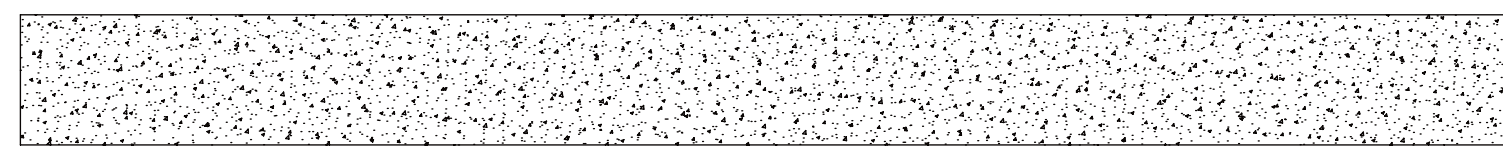
CAP SHEET: COLPHENE FLAM 180 FR GR. TORCH APPLIED



BASE SHEET: COLPHENE FLAM 180, TORCHED APPLIED



PRIMER: ELASTOCOL 500 OR ASTM D-41 PRIMER APPLIED TO DECK AT A RATE OF 100-150 FT²/GAL.



2500PSI MINIMUM STRUCTURAL CONCRETE DECK