



WAUSAU TILE HIDDEN LOK-DOWN



Minimum Thickness

H-Series = 2 ³/₄" thick min

V-Series = 2 ¹/₂" thick min

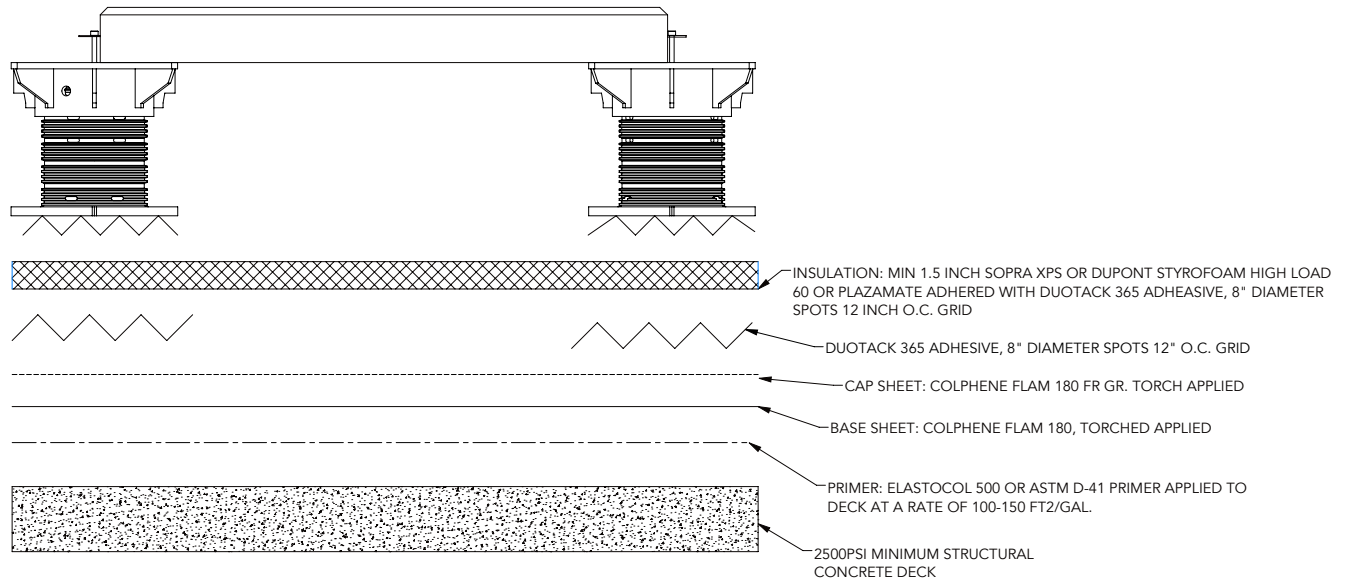
TECHNICAL ADVANTAGES

- Only system on the market coming from a single source paving manufacturer
- Access to roof is not compromised and paver can be easily removed
- Reduced visibility of the system for a more aesthetic paver installation
- Paver thicknesses from 2 ¹/₂" – 4" thick
- Tested to withstand -240 pounds of uplift pressure
- Passed Wausau Tile rafting test - Adhering the pedestal is required at -90 PSF
- Edge perimeter or gluing the pavers is required on all perimeters
- Choose H-Series or V-Series paver lines for a full range of colors and textures
- Custom surfaces and textures are available

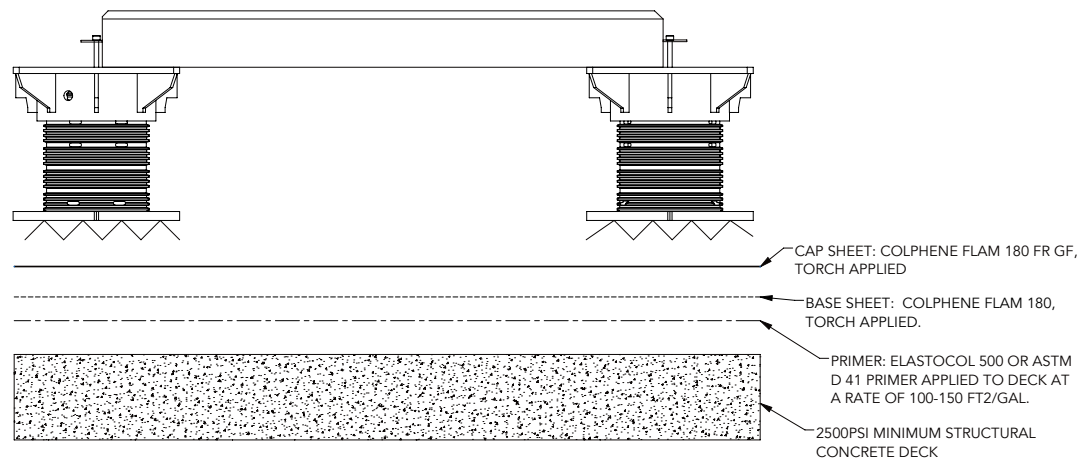
Tested per Miami Dade County Protocol TAS 114-95, Appendix "D"

Installation details achieving -240 PSF uplift pressures

SBS & XPS



SBS

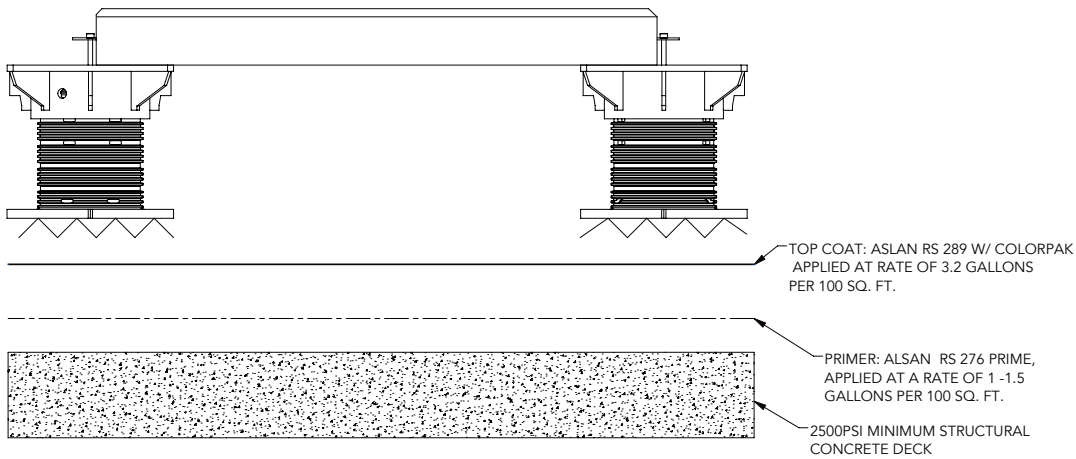


Adhering the pedestals is required at -90 PSF uplift pressure and perimeter will need to be secured on all installations.

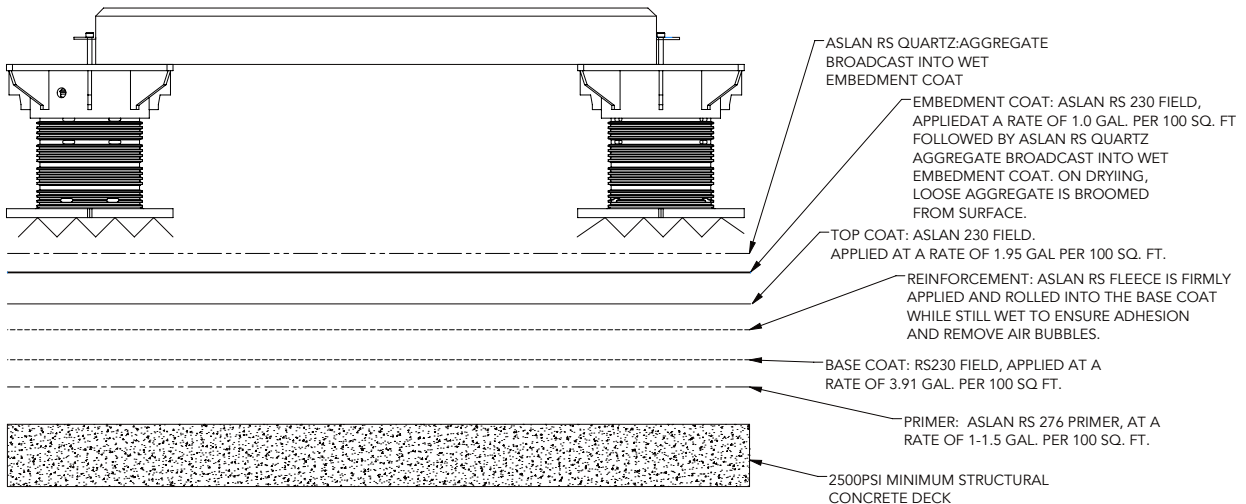
Tested per Miami Dade County Protocol TAS 114-95, Appendix "D"

Installation details achieving -240 PSF uplift pressures

ASLAN RS 289



ASLAN RS 230



Adhering the pedestals is required at -90 PSF uplift pressure and perimeter will need to be secured on all installations.



HIDDEN LOK-DOWN ACCESSORIES

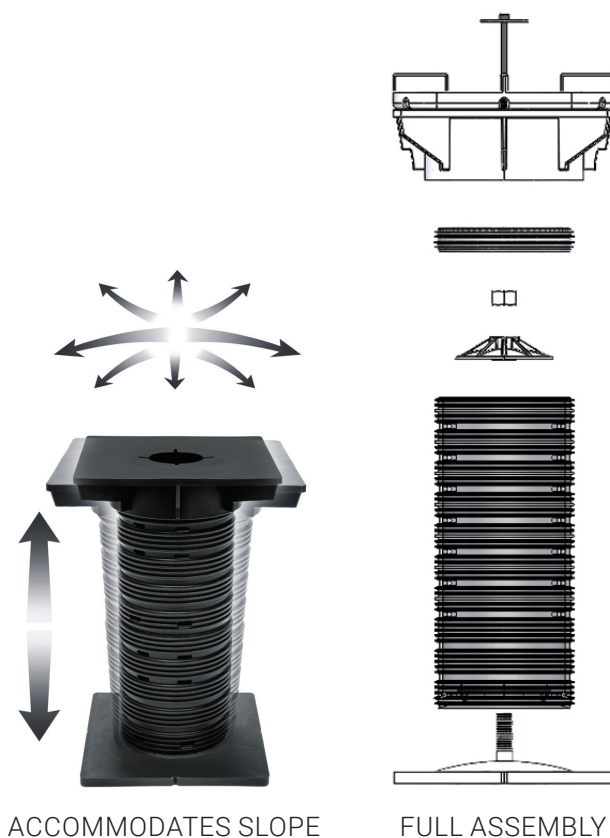
TERRA-STAND

Adjustable pedestal that screws up, down and tilts from side to side to provide a level surface for the paver installation.

Terra-Stand Pedestals are made of a high impact copolymer polypropylene that adjust from 3 1/2" to 21 1/2" in height, with slope compensating up to 5/8" to provide a level installation.

Outside base dimension of 7" x 7" provides contact surface of 49" square. It is installed on previously established grid lines, adjusted for height and slope and ready for installation. Average compressive strength of 3,000 pounds per pedestal.

*Required for Hidden Lok-Down System





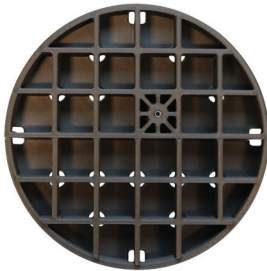
HIDDEN LOK-DOWN UNIT

Hidden Lok-Down Unit allows the pavers to be mechanically fastened into the pedestal and surrounding pavers, reducing the visibility of the system and creating a more aesthetic paver installation.

Hidden Lok-Down Unit includes a stainless steel washer and bolt with puck.

- Washer size is 2.5" dia.
- Tighten bolts to two foot pounds of torque using a torque wrench

*Required for Hidden Lok-Down System



WAFFLE REDUCER - *COMING JUNE 2021!*

Waffle Reducers are manufactured to accommodate height adjustments of 1/2" to 3". With Terra Tab placed on top, the unit consists of one base with 3 pieces of 3/8" waffle rings and 2 pieces of 3/4" waffle rings. An outside base diameter of 6" provides surface contact of 28 square inches. The waffle reducer is made of high impact copolymer polypropylene.

*Optional for Hidden Lok-Down System



TERRA-TAB

Terra-Tabs allow for perfect spacing between paver joints. They allow for expansion, air circulation, drainage and precise paver alignment.

Available in the following sizes:

#5 - 3/8" thick, 5" sq, 3/16" wide spacer

Terra-Tabs are used in conjunction with Terra Stand Pedestals and Waffle reducers. They can be used by itself when no elevation or leveling is needed.

*Required for Hidden Lok-Down System



TERRA-SHIM PLATES

Manufactured to coincide with Terra-Tab. Irregularities in deck sub-surfaces will increase the number of shims required.

#5 - 1/16" thick, 5" sq.

#5 - 1/8" thick, 5" sq.

#5 - 1/4" thick, 5" sq.

Terra-Tabs and Terra-Shims can be set directly on the waterproof membrane, on an optional protection pad or insulation without harm.

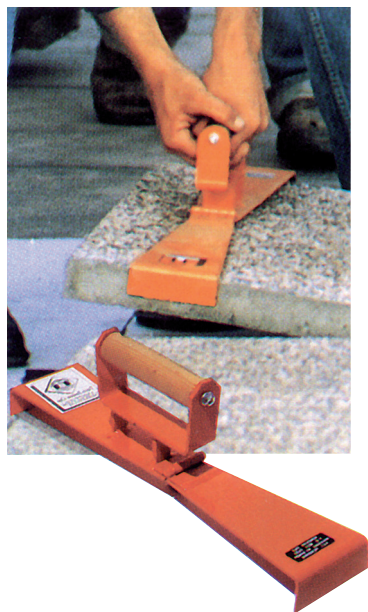
*Optional for Hidden Lok-Down System



TERRA-PAD

Terra-Pad is an 8" x 8" x 1/8" rubber protection pad which can be used under the Terra Stand and Waffle reducer to protect your waterproof membrane.

*Optional for Lok-Down and Hidden Lok-Down Systems



BLOK HANDLE

Made of 10-gauge HRCQ steel, Blok Handles are available for 12", 18" and 24" Terra-Pavers. Precise sizing of the handle provides for easy manipulation during installation without harm to the paver or other components, while allowing for 3/16" (4.76 mm) joints. The handle also makes removal easy should repairs to subsurface components be necessary.

BIG-BLOK HANDLE

Made of steel, unit is adjustable to work with 24", 30" and 36" pavers. Requires two people to operate.

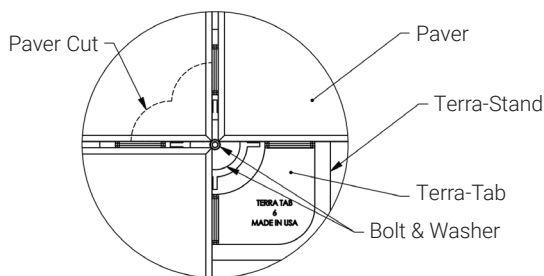
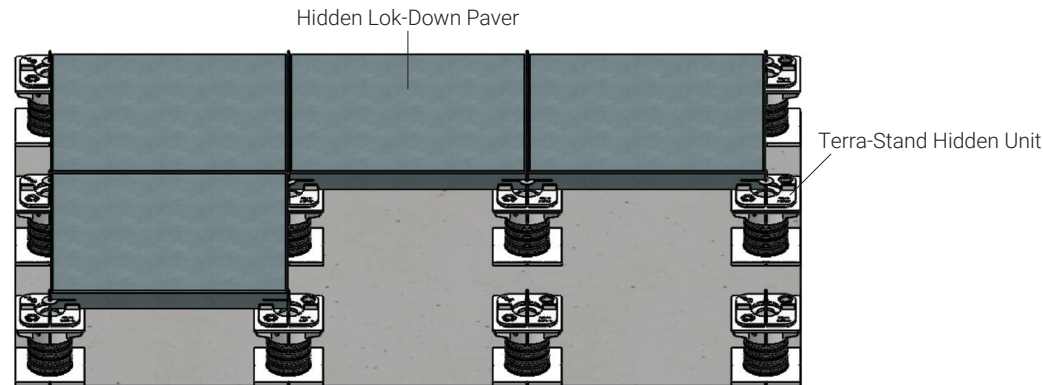
Optional wheel attachment that allows for a one man operation is available.



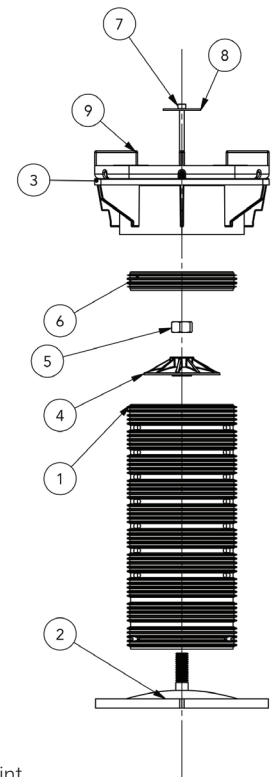
TERRA-STAND PEDESTAL SYSTEM INSTALLATION

Pavers can be Install on top of pedestals 2 different ways:

- 1 - Installation can start at the center of pedestal grid, and work toward the edges. Edge pavers will need to be cut to fit.
- 2 - Installation can start at a wall with full size pavers. As grid is filled, edge pavers will need to be cut.
- 3 - Edge perimeter will need to be glued down or secured with a perimeter edge.



Pedestal needs to be centered for proper installation



1. Terra Core
2. Pedestal Base
3. Pedestal Top
4. Leveling Bracket
5. Anchor Nut
6. Threaded Insert
7. Screw
8. Washer
9. #5 Terra-Tab $\frac{3}{16}$ " Joint

| A | B | C | D | E |
|---------------------|---|-------------------------|-----------------------|------------------------|
| Waffle Reducer | 6" Terra Stand | 11" Terra Stand | 16" Terra Stand | 21" Terra Stand |
| Adjusts 1½" - 3" | Adjusts 3.5" - 6.5" <small>DO NOT cut core shorter than 2 7/8</small> | Adjusts 3.5" - 11.5" | Adjusts 6" - 16.5" | Adjusts 11" - 21.5" |



A



B



C

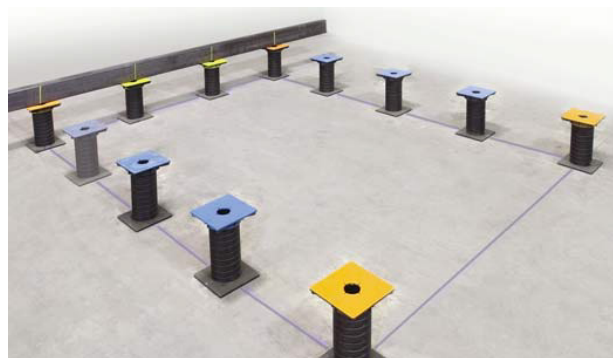
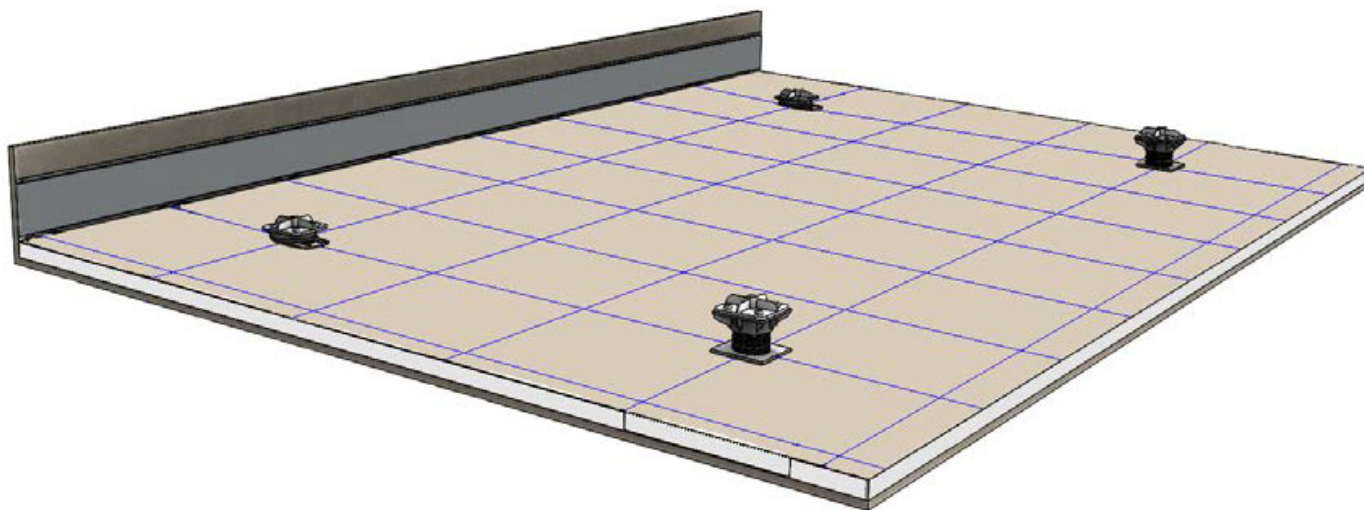


D

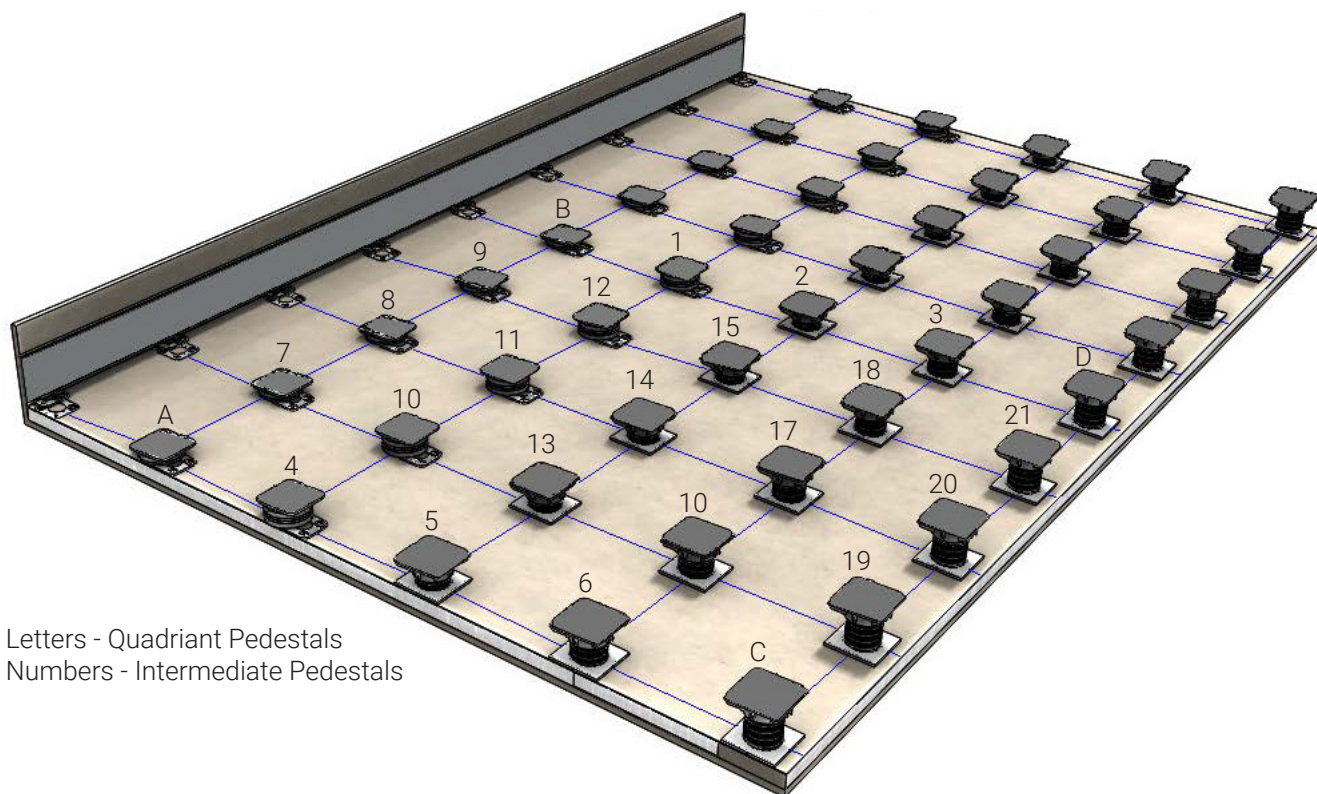
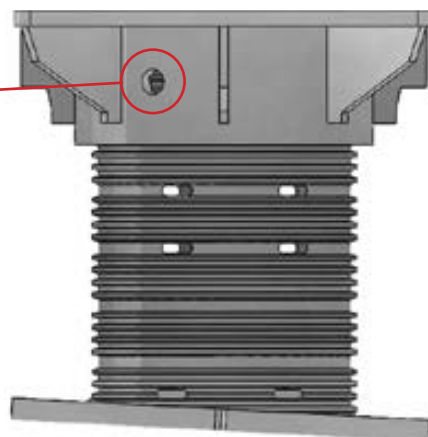


E

- Determine paver height.
- Establish paver grid lines. Grid can be centered in the area or aligned with a wall.
- Set quadrant pedestals at required height.
- Use a transit or laser level to determine pedestals height.



- With base flat on sloped roof, level pedestal top and tighten base nut.
- Prior to installing top, screw in Hidden Lok-Down puck into the Terra-Stand top.
- Pedestal core must be visible through side inspection hole.
- Make final height adjustments by rotating top of pedestal.
- Pedestal cores are cut to length, discarding open end piece.



Letters - Quadriant Pedestals
Numbers - Intermediate Pedestals

- Position intermediate pedestals at the grid intersection lines between quadriant pedestals.
- Use a straight edge to set intermediate pedestals to desired height. Screw to bottom of Bar & Lock.
- Terra-Tabs provide spacing between pavers. They are placed on top of the Terra Stand Pedestals.
- Use Terra-Tabs and Terra-Shims for micro adjustment to level the pavers.

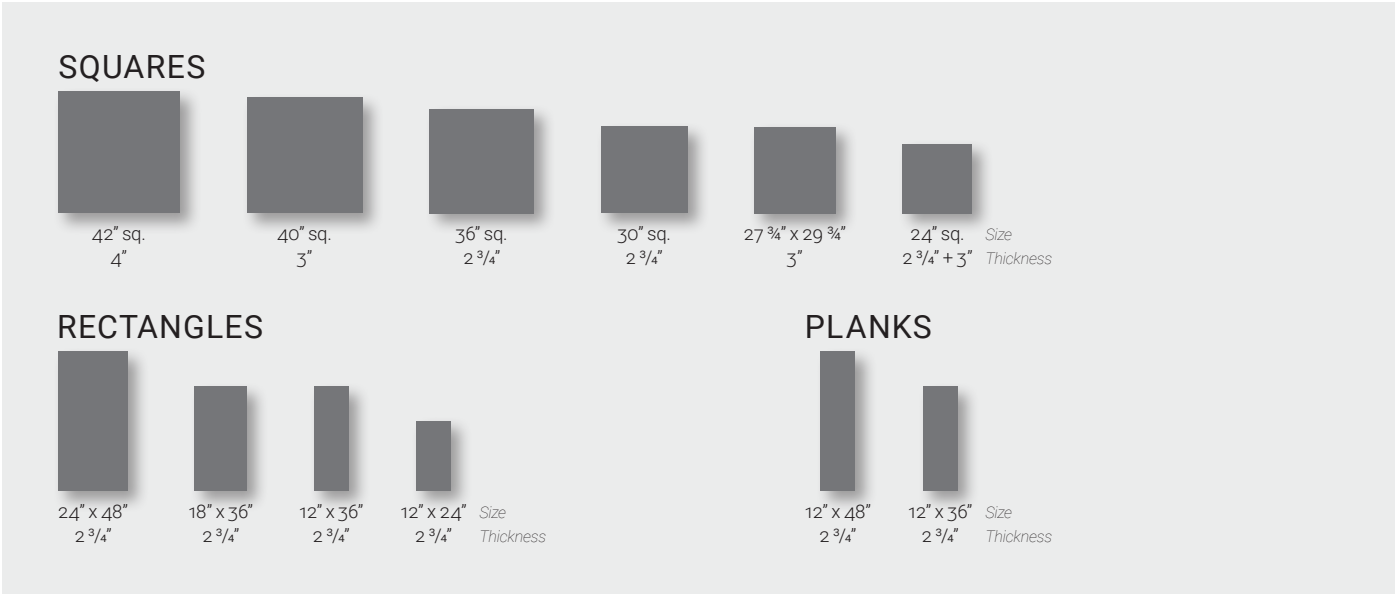




Courtyard by Marriott | El Paso, TX | Quattro Series Pavers

STANDARD H-SERIES SIZES

Pavers range in thickness from 2 3/4" - 4" depending on the size. Each Wausau Tile paver series is also available in a variety of standard and custom plank-style paver sizes.



TECHNICAL INFORMATION

| PROPERTY | ADVANCED TESTING VALUE | TEST METHOD |
|----------------------|--|-------------|
| Compressive Strength | > 9,500 PSI avg. with no individual unit less than 8,000 PSI | ASTM C 140 |
| Water Absorption | < 4.5% | ASTM C 140 |
| Flexural Strength | > 1,800 pound average | ASTM C 140 |
| Freeze/Thaw | < 1% loss of dry weight (100 cycles) | ASTM C 1262 |
| Center Load | 2,000 lbs. | WTCL 99 |

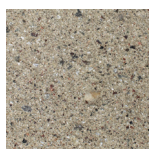
Testing based on 24"x24"x2" pressed paver



ESTATE



HRT-15
**75



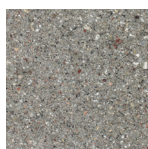
HRT-20
**36



HRT-25
**45



HRT-27
**42



HRT-30
**20



HRT-32



HRT-34
**33



HRT-36
**25



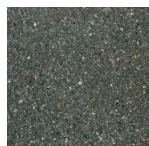
HRT-38
**13



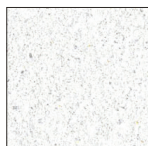
HRT-40
**18



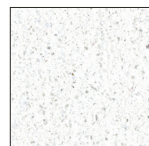
HRT-50
**23



HRT-60
**8



*HCB-15
SRI 85



*HCB-20
SRI 82

*HCB Pavers have a minimum
of 78% Solar Reflectance (SRI)
*High Reflective Colors
(additional cost)*

ESTATE II



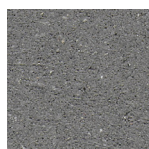
HNBF-15



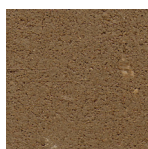
HNBF-20



HNBF-25



HNBF-30



HNBF-40

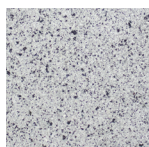


HNBF-50

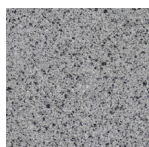


HNBF-60
**5

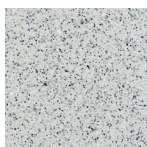
FRONTIER



HFT-10
**52



HFT-12
**37



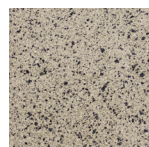
HFT-15



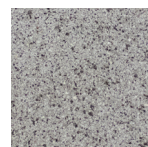
HFT-17



HFT-20
**65



HFT-25
**53



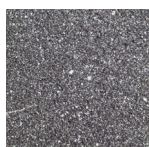
HFT-30



HFT-35



HFT-40



HFT-60
**14.6



HFT-65
**3.7



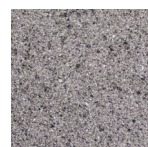
HFT-70



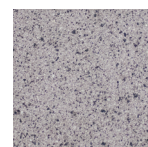
HFT-80



HFT-85
**41



HFT-90
**32



HFT-95
**42

GALAXY



HGL-15



HGL-20



HGL-30



HGL-33



HGL-35



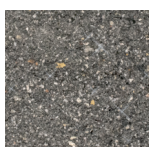
HGL-40



HGL-50

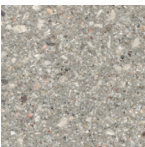


HGL-60

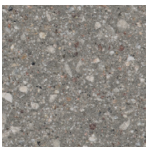


HGL-65

ECOPREMIER



HEP-10
**32



HEP-20
**31



HEP-30
**18



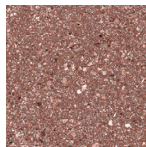
HEP-40
**33



HEP-50
**25

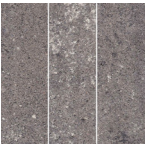


HEP-60
**28

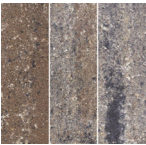


HEP-70
**31

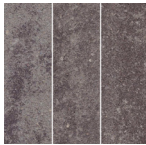
QUATTRO SERIES



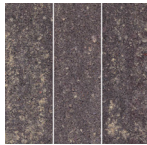
HBL-710



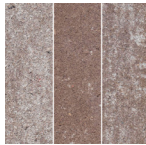
HBL-715



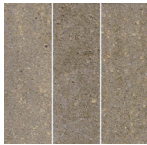
HBL-720



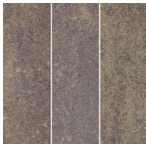
HBL-725



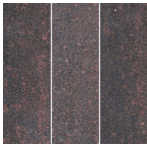
HBL-730



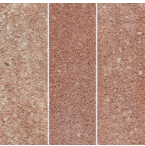
HBL-740



HBL-745



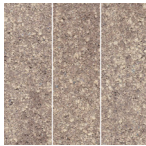
HBL-750
**5



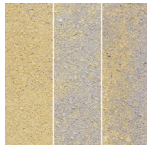
HBL-760



HBL-765
**29

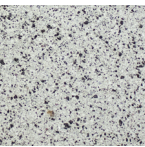


HBL-770

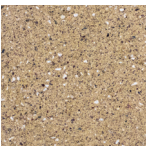


HBL-775

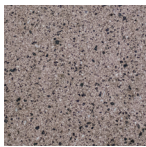
RIDGELINE



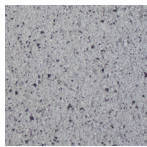
HRL-15
**29



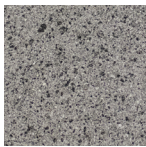
HRL-20
**43



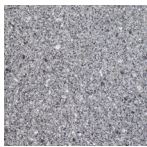
HRL-25
**46



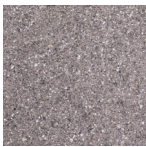
HRL-30
**49



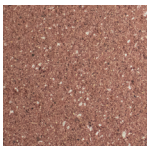
HRL-35
**40



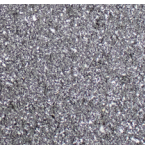
HRL-37
**35



HRL-40
**25



HRL-50
**29



HRL-60
**18

RIVERSIDE



HRS-15
**79



HRS-20
**48



HRS-30
**27



HRS-33
**26



HRS-35
**31



HRS-40
**25



HRS-50
**25



HRS-60
**11



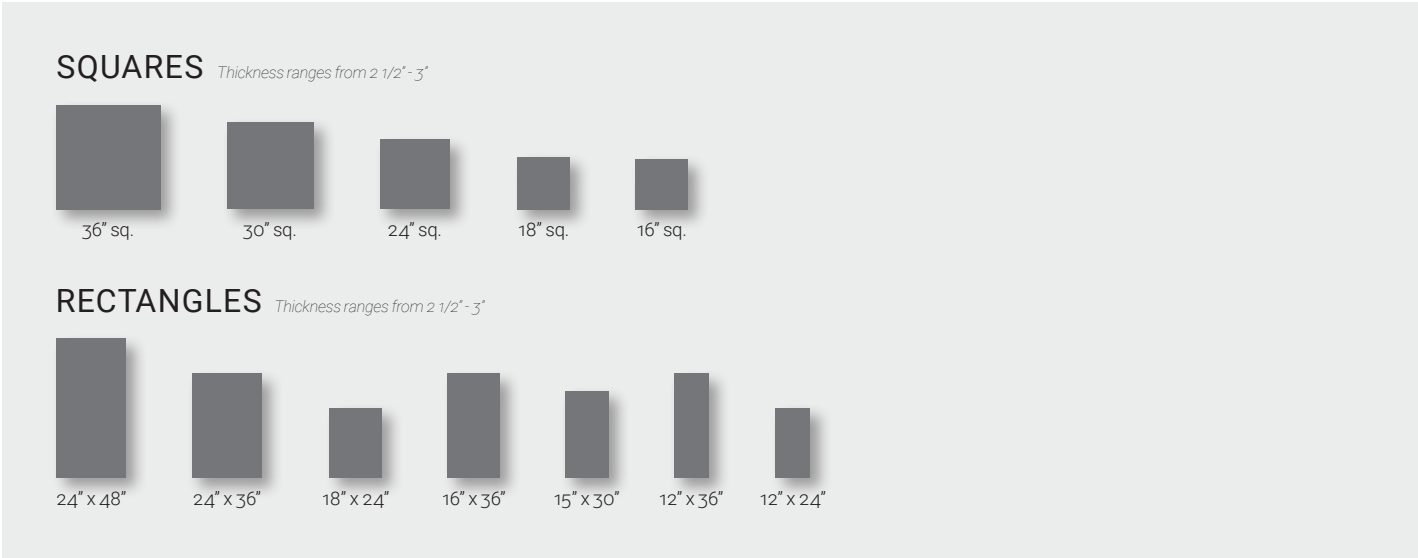
HRS-65
**14



Foundry Square | San Francisco, CA | ExpoStone Pavers

STANDARD V-SERIES SIZES

All pavers available in thickness ranging from 2 1/2" - 3" on certain sizes. In addition to these standard sizes, each Wausau Tile paver series is available in a variety of standard and custom plank-style paver sizes.



TECHNICAL INFORMATION

| PROPERTY | ADVANCED TESTING VALUE | TEST METHOD |
|----------------------|--|-------------|
| Compressive Strength | > 8,000 PSI avg. with no individual unit less than 7,500 PSI | ASTM C 140 |
| Water Absorption | < 6% | ASTM C 140 |
| Flexural Strength | > 1,200 pound average | ASTM C 140 |
| Freeze/Thaw | < 1% loss of dry weight (100 cycles) | ASTM C 1262 |
| Center Load | 1,850 lbs. | WTCL 99 |

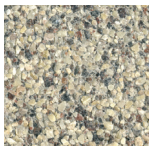
Testing based on 24"x24"x2" pressed paver



APEX



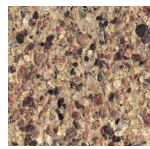
APX-10



APX-15



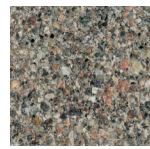
APX-17



APX-20



APX-25



APX-30



APX-32



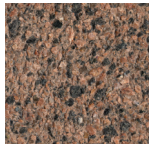
APX-34



APX-36



APX-40



APX-45



APX-50



APX-60

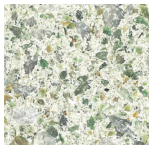


APX-65

AURORA



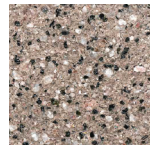
VAR-10
**49



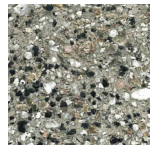
VAR-25
**34



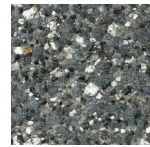
VAR-35
**38



VAR-40

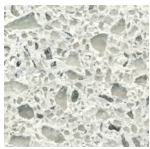


VAR-50

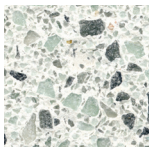


VAR-70
**28

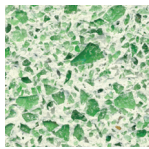
BLASTED GLASS



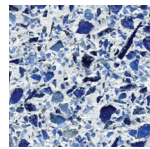
BG-10
**64



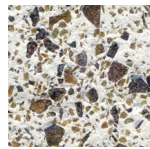
BG-20
**53



BG-30
**58



BG-40
**37



BG-50

BRILLIANCE



BR-15



BR-17



BR-19



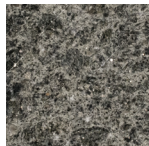
BR-20



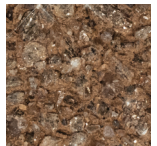
BR-30



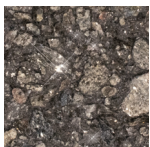
BR-33



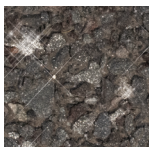
BR-35



BR-40

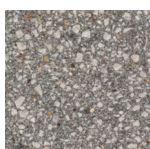


BR-60



BR-65

ECOPREMIER



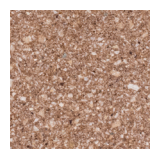
EP-10
**32



EP-20
**31



EP-30
**18



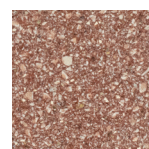
EP-40
**33



EP-50
**25



EP-60
**28



EP-70
**37

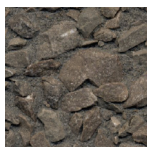
EXPOSTONE



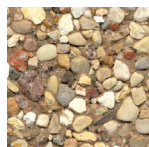
ES-10
**48



ES-203



ES-303

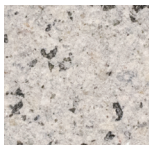


ES-403



ES-50

EXPRESSIONS



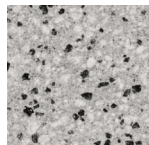
XP-10
**58



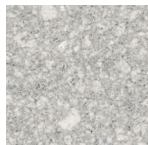
XP-20
**65



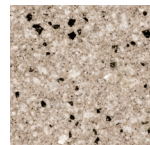
XP-30
**72



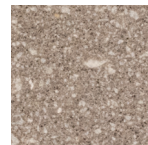
XP-40
**42



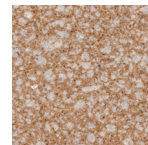
XP-50
**46



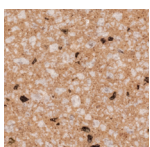
XP-60
**48



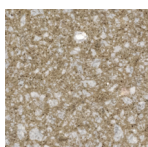
XP-70
**52



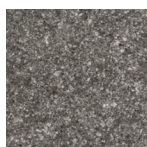
XP-80
**46



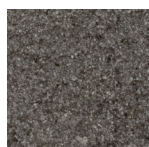
XP-90



XP-100
**40



XP-110



XP-120

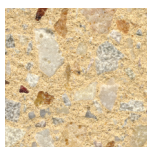
EXTERIOR TERRAZZO



*ET-10
**40



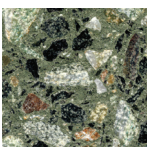
*ET-20
**38



*ET-30
**41



*ET-40

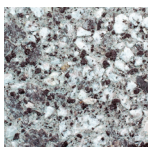


*ET-50

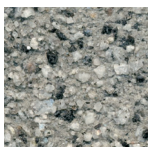
Pavers available in thickness ranging from 2" - 2 7/8" depending on the size.

**Sealed*

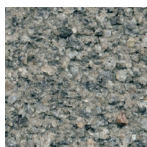
GRANITEX



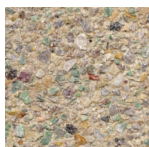
GTX-10
**34



GTX-20
**24



GTX-30



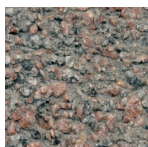
GTX-40



GTX-50
**52



GTX-60



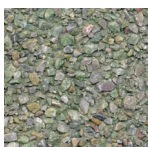
GTX-70



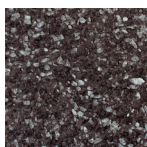
GTX-80



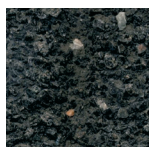
GTX-90



GTX-100

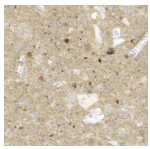


GTX-110

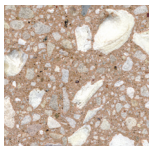


GTX-120

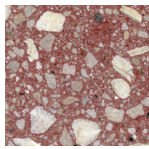
OCEAN VIEW



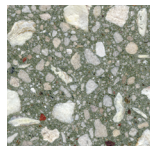
*SEA-10
**56



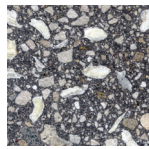
*SEA-20
**53



*SEA-30



*SEA-40

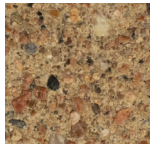


*SEA-50

Pavers available in thickness ranging from 2" - 2 7/8" depending on the size.

**Sealed*

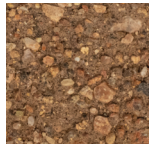
RIVERBEND



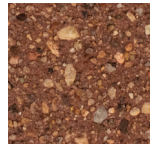
RB-20



RB-30



RB-40



RB-50

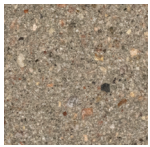


RB-60

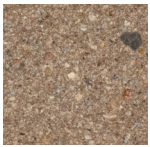


RB-70

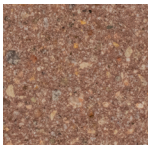
SAND SERIES



SS-10
**34



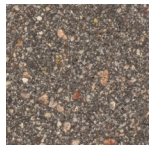
SS-20
**25



SS-30
**25



SS-40

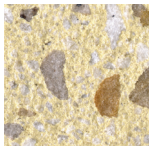


SS-50

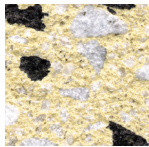
SERIES SESTO™



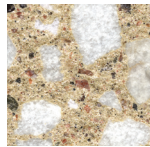
*SSP-510
**70



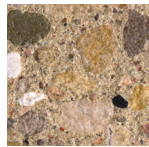
*SSP-520
**70



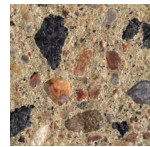
*SSP-530
**63



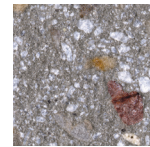
*SSP-540
**60



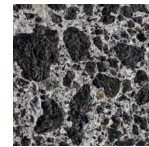
*SSP-550
**48



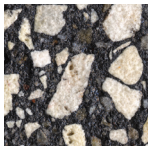
*SSP-560
**40



*SSP-570
**42



*SSP-580
**26



*SSP-590
**33

Pavers available in thickness ranging from 2" - 2 7/8" depending on the size.

**Unsealed*

STONEY CREEK



*SC-10
**50



*SC-20
**35



*SC-30
**38



*SC-35



*SC-40



*SC-45



*SC-50



*SC-60



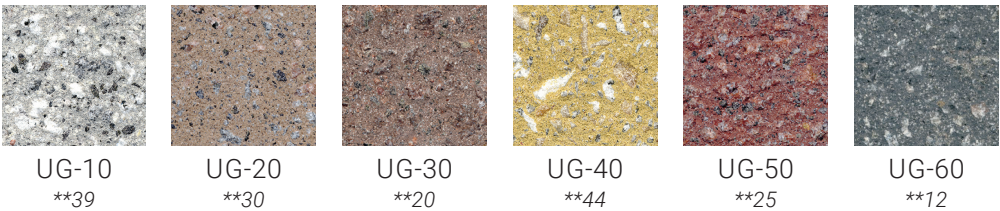
*SC-65

**Sealed*

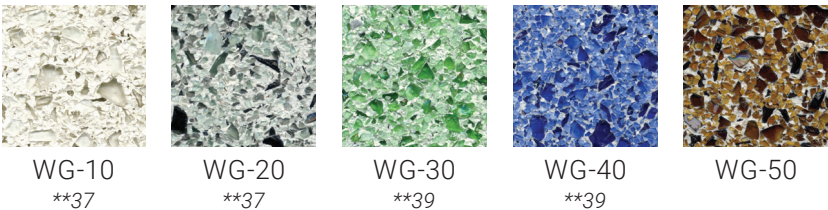


**SRI

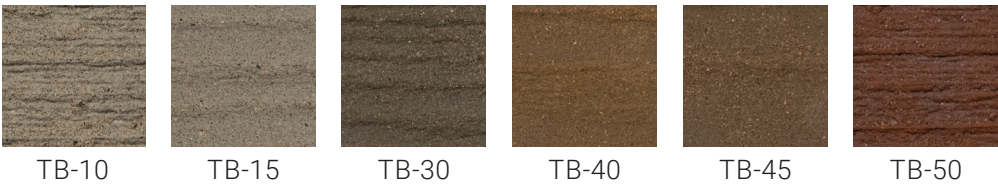
TEXTURED GRANITE



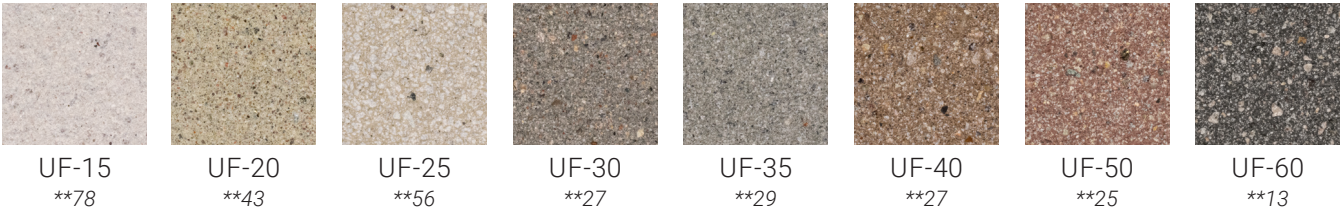
WASHED GLASS



TIMBER



ULTRAFACE



BALLAST



STANDARD SIZES



24" sq.

Pavers available in thickness of 2".

Maintaining Wausau Pavers

Wausau Tile pavers can be maintained to retain the attractive appearance and prolong the life of the pavers. When using maintenance materials, please follow the product manufacturer's instructions regarding the use of any equipment or cleaning materials described here. Be sure to angle the spray and limit the pressure to 2,000 PSI, as not to damage the surface of the paver when using a pressure washer. For specific or unusual problems, please call us at 800-388-8728.

Weekly Maintenance:

Sweep or pressure wash deck. In areas of high traffic, such as doorways, daily cleaning may be required.

Semiannual Maintenance (Spring and Fall):

Power sweep, then pressure wash total deck surface. Spot clean any stained areas using procedures described in "Cleaning Heavily Soiled Areas."

Remove pavers located over drains on open joint systems. Clean Debris from all drain covers to prevent plugging of drains and replace pavers.

Check pavers for rocking, low or high edges, joint spacing, alignment and broken or chipped pavers. If minor settling or movement has occurred, pavers can be leveled and adjusted with shims. Chipped or broken pavers should be replaced.

Cleaning Heavily Soiled Areas:

Soiled areas should be cleaned as soon as possible to avoid staining. The type of material causing the soiling determines the correct procedures.

A. Oil or Petroleum Products

Remove as much of the material as possible with hot water high pressure washer. Apply degreaser cleaner directly to the soiled area. With a stiff nylon brush or broom, scrub the area. Rinse the area with hot water high pressure washer. In some cases, a second cleaning may be required.

B. Rust Stains

Soak area with water. Scrub rust stains with masonry cleaner products per manufacturer's recommendations. (Be extremely careful around any metal surfaces). Rinse area thoroughly.

C. Soiling from Normal Foot Traffic, Road Salts, Everyday Use

Wash area thoroughly with hot water high pressure washer. On heavily soiled areas, spray the area with a commercial grade cleaner and scrub with a nylon brush. Rinse thoroughly.

D. Gum or Tar

Apply dry ice directly on top of the gum or tar. After freezing, use a putty knife or scraper to remove the gum or tar from the surface.

E. Tobacco Stains on Light Colored Pavers

After pressure washing with hot water, saturate a paper towel with household bleach. Apply towel directly to stain and cover with minimum 3 mil poly. Tape poly to surface to hold in place. Leave stain covered for 24 to 48 hours. Remove to see if stain is gone or lightened. Repeat if necessary.

Cleaner Recommendations (Follow all manufacturer instructions):

- Techniseal - Paver Prep (HD) Heavy Duty Efflorescence Cleaner
- Prosoco - Sure Klean 600 (New Masonry Cleaner)
- Rain Guard Restore-N-Prep

Snow Removal:

Snow can be cleaned from the deck using shovels, walk-behind snow blowers or power brushes. A four wheeled garden tractor, weight not exceeding 1,700 lbs. manned, can also be used. Nylon or rubber scrapers are recommended to avoid scratching of pavers. Tire chains can cause minor scratching and extra care should be taken with chains.

The use of snow melt materials should be minimal and in accordance with manufacturer's recommendations. Some types of snow melt are not recommended for use on new concrete and can cause surface damage to the paver.

De-Icer Recommendations (Follow all manufacturer instructions):

- Melt-Off - Ice Melter
- Premier - Ice Melter
- Road Runner - Ice Melt

Open Joint Installations:

Open joint installation is unique in that the pavers are elevated to allow water and air to flow through the joints of the pavers. It is essential that all the joints and all drains stay open, clean and free of dirt and debris. Failure to maintain clean joints may result in performance issues.

Efflorescence in Colored Pavers:

Efflorescence is a condition which appears as a white stain on some colored concrete and masonry products. It is a common occurrence in new concrete, created by sodium and sulfate compounds of several hydroxides, minerals, chlorides and nitrates which deposit on the surface and pores. It is the result of moisture evaporation and is most common on darker colored pavers and fabricated surfaces.

Water (rain, humidity, or ground water which "wicks") penetrates the pavers and dissolves latent salt. Sun draws the salt in solution to the surface and as moisture evaporates it is deposited on the surface. Efflorescence clears up as paver's age and eventually dissipates. The length of time varies with weather conditions and wear. Efflorescence can also be caused when salts in the sub-base material wick up around and through the pavers and joints and deposit on the paver surface and sides.

**Efflorescence Cleaner Recommendations (Follow all manufacturer instructions):**

- Techniseal - Paver Prep (HD) Heavy Duty Efflorescence Cleaner
- Quickrete - Efflorescence & Rust Remover
- Techniseal - Paver Prep & Efflo Cleaner

Wausau Tile Warranty:

Wausau Tile products are warranted to be free from defect in material and workmanship during manufacturing based on applicable industry standards. Warranty periods begin on delivery date of the warranted product and extend for the period listed below:

- Precast terrazzo products are warranted for two years.
- Terrazzo tile, plastic and metal pieces are warranted for one year.
- Framing and aluminum products are warranted for two years.
- Powder coating is warranted for two years.
- Thermo-plastic coating is warranted for five years.
- Concrete site furnishings are warranted for two years.
- Pavers are warranted for three years if properly installed according to both project specifications and Wausau Tile installation recommendations. Placing pavers on non-Wausau Tile pedestals voids this LIMITED WARRANTY.