



WAUSAU TILE V-SERIES

TECHNICAL ADVANTAGES

- Paver thicknesses from 1 3/4" – 3" thick
- Ability to achieve an exposed stone look
- Custom surfaces and textures are available
- Ability to use larger aggregates
- Lok-Down pavers for high winds



Pan American Hotel | Wildwood Crest, NJ | Washed Glass Pavers



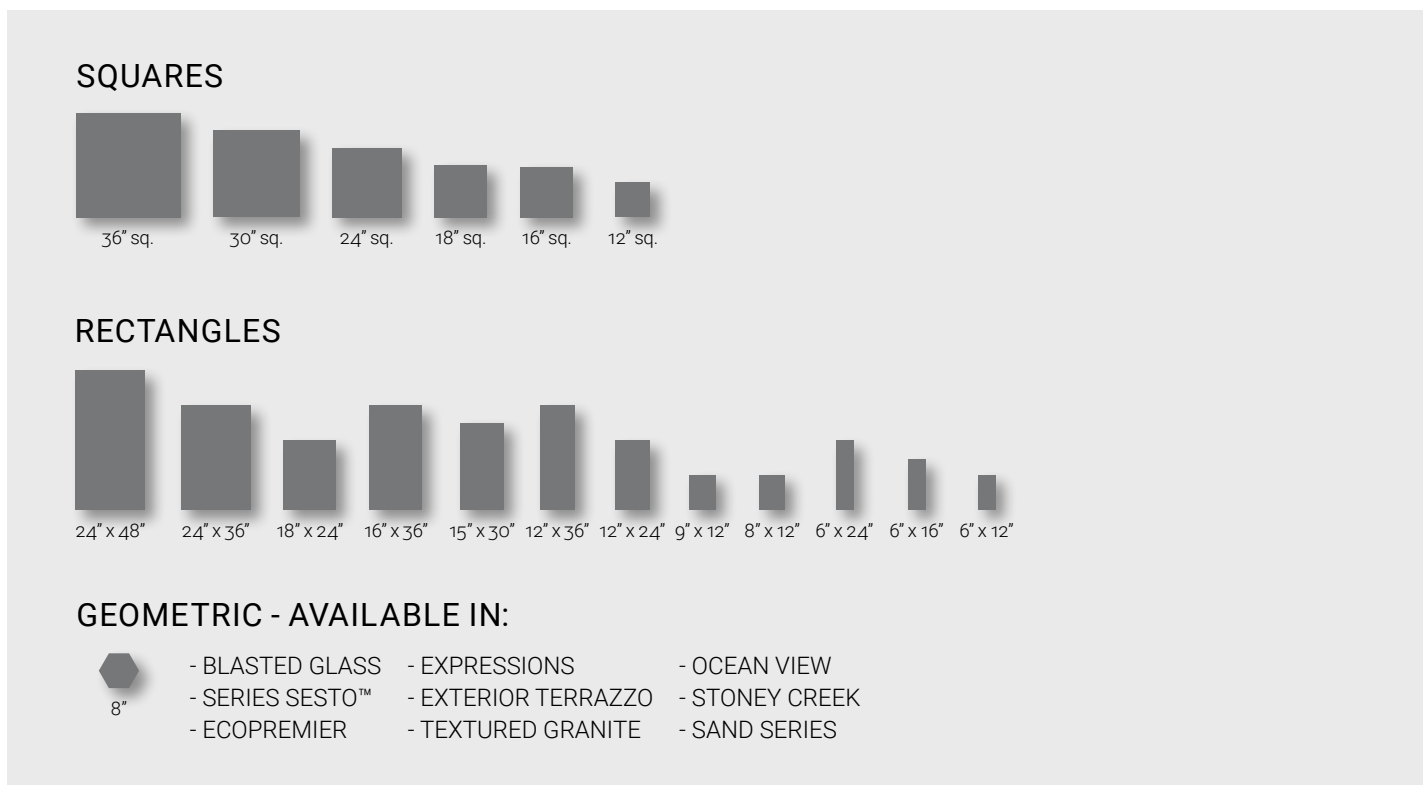
Kiener Plaza | St. Louis, MO | Exterior Terrazzo Pavers



Epic Headquarters | Verona, WI | Timber Pavers

STANDARD SIZES

All pavers available in thickness ranging from 1 3/4" - 3" on certain sizes. In addition to these standard sizes, each Wausau Tile paver series is available in a variety of standard and custom plank-style paver sizes.



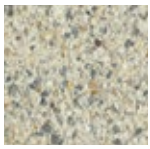
TECHNICAL INFORMATION

PROPERTY	ADVANCED TESTING VALUE	TEST METHOD
Compressive Strength	> 8,000 PSI avg. with no individual unit less than 7,500 PSI	ASTM C 140
Water Absorption	< 6%	ASTM C 140
Flexural Strength	> 1,200 pound average	ASTM C 140
Freeze/Thaw	< 1% loss of dry weight (100 cycles)	ASTM C 1262
Center Load	1,850 lbs.	WTCL 99

Testing based on 24"x24"x2" pressed paver



APEX



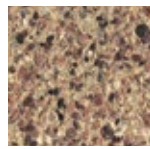
APX-10



APX-15



APX-17



APX-20



APX-25



APX-30



APX-32



APX-34



APX-36



APX-40



APX-45



APX-50



APX-60

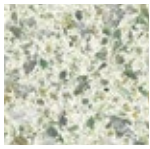


APX-65

AURORA



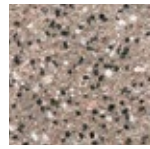
VAR-10
**49



VAR-25
**34



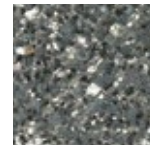
VAR-35
**38



VAR-40



VAR-50

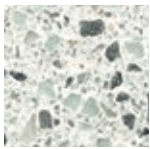


VAR-70
**28

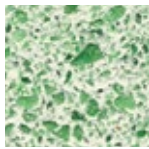
BLASTED GLASS



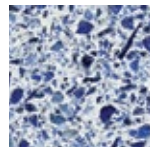
BG-10
**64



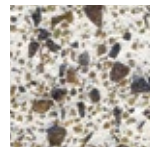
BG-20
**53



BG-30
**58

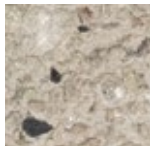


BG-40
**37



BG-50

BRILLIANCE



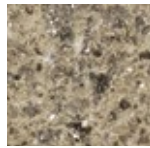
BR-15



BR-17



BR-19



BR-20



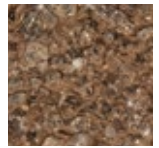
BR-30



BR-33



BR-35



BR-40

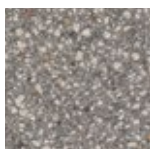


BR-60



BR-65

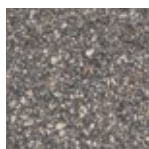
ECOPREMIER



EP-10
**32



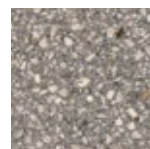
EP-20
**31



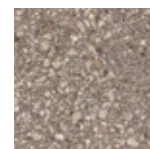
EP-30
**18



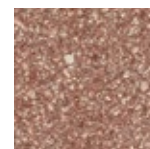
EP-40
**33



EP-50
**25



EP-60
**28



EP-70
**31

EXPOSTONE



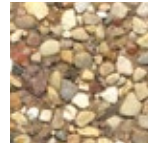
ES-10
**48



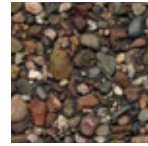
ES-203



ES-303

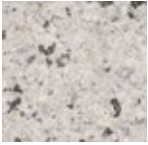


ES-403



ES-50

EXPRESSIONS



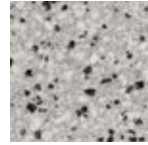
XP-10
**58



XP-20
**65



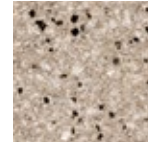
XP-30
**72



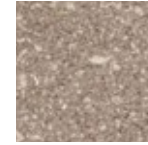
XP-40
**42



XP-50
**46



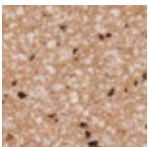
XP-60
**48



XP-70
**52



XP-80
**46



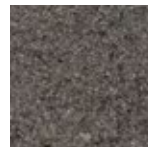
XP-90



XP-100
**40

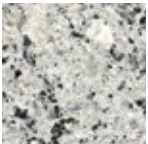


XP-110



XP-120

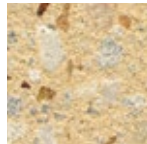
EXTERIOR TERRAZZO



*ET-10
**40



*ET-20
**38



*ET-30
**41



*ET-40

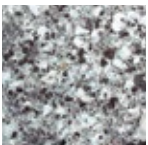


*ET-50

Pavers available in thickness ranging from 2" - 2 7/8" depending on the size.

**Sealed*

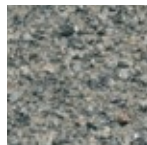
GRANITEX



GTX-10
**34



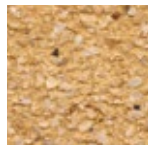
GTX-20
**24



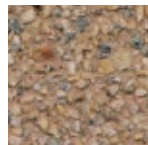
GTX-30



GTX-40



GTX-50
**52



GTX-60



GTX-70



GTX-80



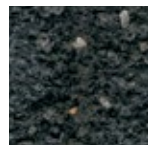
GTX-90



GTX-100

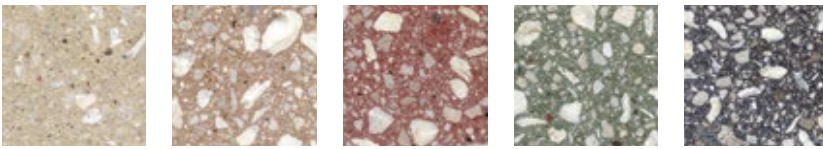


GTX-110



GTX-120

OCEAN VIEW



*SEA-10
**56

*SEA-20
**53

*SEA-30

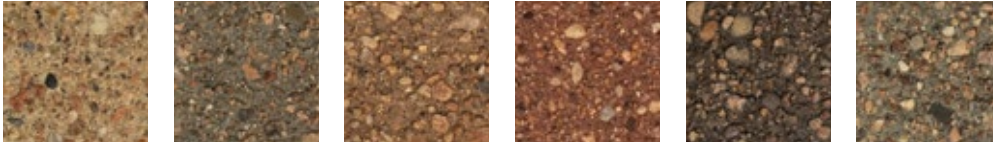
*SEA-40

*SEA-50

Pavers available in thickness ranging from 2" - 2 7/8" depending on the size.

**Sealed*

RIVERBEND



RB-20

RB-30

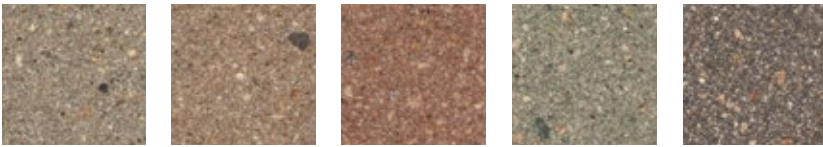
RB-40

RB-50

RB-60

RB-70

SAND SERIES



SS-10
**34

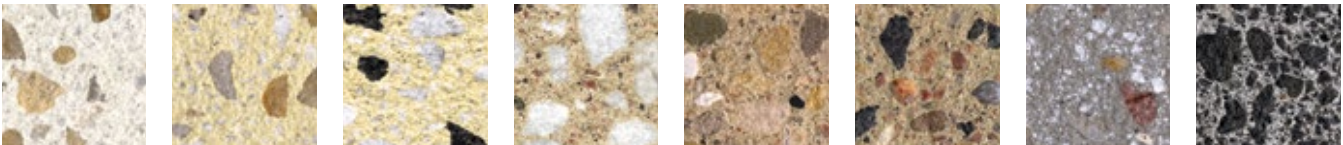
SS-20
**25

SS-30
**25

SS-40

SS-50

SERIES SESTO™



*SSP-510
**70

*SSP-520
**70

*SSP-530
**63

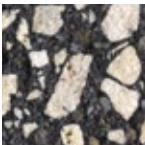
*SSP-540
**60

*SSP-550
**48

*SSP-560
**40

*SSP-570
**42

*SSP-580
**26



*SSP-590
**33

Pavers available in thickness ranging from 2" - 2 7/8" depending on the size.

**Unsealed*

STONEY CREEK



*SC-10
**50

*SC-20
**35

*SC-30
**38

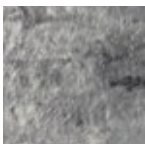
*SC-35

*SC-40

*SC-45

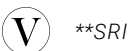
*SC-50

*SC-60

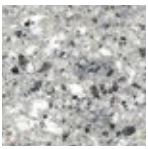


*SC-65

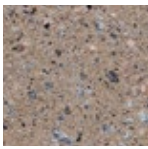
**Sealed*



TEXTURED GRANITE



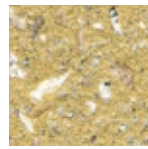
UG-10
**39



UG-20
**30



UG-30
**20



UG-40
**44



UG-50
**25



UG-60
**12

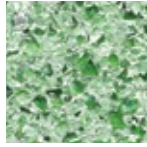
WASHED GLASS



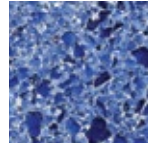
WG-10
**37



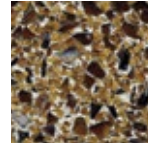
WG-20
**37



WG-30
**39



WG-40
**39



WG-50

TIMBER



TB-10



TB-15



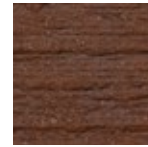
TB-30



TB-40



TB-45



TB-50

ULTRAFACE



UF-15
**78



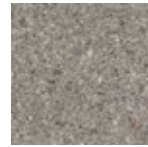
UF-20
**43



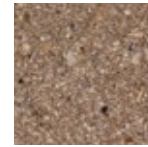
UF-25
**56



UF-30
**27



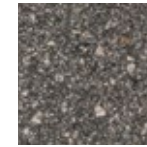
UF-35
**29



UF-40
**27



UF-50
**25



UF-60
**13

BALLAST



B-10

STANDARD SIZES



24" sq.

Pavers available in thickness of 2".

DETECTABLE WARNING ADA PAVERS



A-10



A-20



A-30



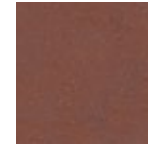
A-40



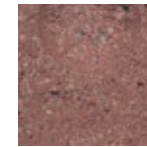
A-50



A-60



A-70



A-80



A-90



A-100

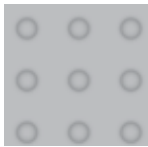


A-110



A-120

ADA PATTERNS



ADA-2



DIRECTIONAL
BAR



TACTILE
WARNING

STANDARD SIZES



24" sq.



12" sq.

Pavers available in thickness ranging from 2" - 2 3/4" depending on the size.

LOK-DOWN SYSTEM CAP COLORS

Custom colors available in top plate and screw.



LD_10 Cream



LD_20 Tan



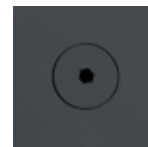
LD_30 Gray



LD_40 Brown



LD_50 Red



LD_60 Black



LD_White

CAN ONLY BE USED WITH THE FOLLOWING V-SERIES:

BLASTED GLASS, ECOPREMIER, EXPRESSIONS, EXTERIOR TERRAZZO, OCEAN VIEW, SAND SERIES, SERIES SESTO™, STONEY CREEK, TEXTURED GRANITE, TIMBER, ULTRAFACE

STANDARD SIZES THAT CAN BE USED



24" x 48"



30" sq.



24" sq.

Thickness ranging from 2" - 2 1/2" depending on the size.



Maintaining Wausau Pavers

Wausau Tile pavers can be maintained to retain the attractive appearance and prolong the life of the pavers. When using maintenance materials, please follow the product manufacturer's instructions regarding the use of any equipment or cleaning materials described here. Be sure to angle the spray and limit the pressure, as not to damage the surface of the paver when using a pressure washer. For specific or unusual problems, please call us at 800-388-8728.

Weekly Maintenance

Sweep or pressure wash deck. In areas of high traffic, such as doorways, daily cleaning may be required.

Semiannual Maintenance (Spring and Fall)

Power sweep, then pressure wash total deck surface. Spot clean any stained areas using procedures described in "Cleaning Heavily Soiled Areas."

Remove pavers located over drains on open joint systems. Clean Debris from all drain covers to prevent plugging of drains and replace pavers.

Check pavers for rocking, low or high edges, joint spacing, alignment and broken or chipped pavers. If minor settling or movement has occurred, pavers can be leveled and adjusted with shims. Chipped or broken pavers should be replaced.

Cleaning Heavily Soiled Areas

Soiled areas should be cleaned as soon as possible to avoid staining. The type of material causing the soiling determines the correct procedures.

A. Oil or Petroleum Products

Remove as much of the material as possible with hot water high pressure washer. Apply degreaser cleaner directly to the soiled area. With a stiff nylon brush or broom, scrub the area. Rinse the area with hot water high pressure washer. In some cases, a second cleaning may be required.

B. Rust Stains

Soak area with water. Scrub rust stains with masonry cleaner products per manufacturer's recommendations. (Be extremely careful around any metal surfaces). Rinse area thoroughly.

C. Soiling from Normal Foot Traffic, Road Salts, Everyday Use

Wash area thoroughly with hot water high pressure washer. On heavily soiled areas, spray the area with a commercial grade cleaner and scrub with a nylon brush. Rinse thoroughly.

D. Gum or Tar

Apply dry ice directly on top of the gum or tar. After freezing, use a putty knife or scraper to remove the gum or tar from the surface.

E. Tobacco Stains on Light Colored Pavers

After pressure washing with hot water, saturate a paper towel with household bleach. Apply towel directly to stain and cover with minimum 3 mil poly. Tape poly to surface to hold in place. Leave stain covered for 24 to 48 hours. Remove to see if stain is gone or lightened. Repeat if necessary.

Snow Removal

Snow can be cleaned from the deck using shovels, walk-behind snow blowers or power brushes. A four wheeled garden tractor, weight not exceeding 1,700 lbs. manned, can also be used. Nylon or rubber scrapers are recommended to avoid scratching of pavers. Tire chains can cause minor scratching and extra care should be taken with chains.

The use of snow melt materials should be minimal and in accordance with manufacturer's recommendations. Some types of snow melt are not recommended for use on new concrete and can cause surface damage to the paver.

Open Joint Installations

Open joint installation is unique in that the pavers are elevated to allow water and air to flow through the joints of the pavers. It is essential that all the joints and all drains stay open, clean and free of dirt and debris. Failure to maintain clean joints may result in performance issues.

Efflorescence in Colored Pavers

Efflorescence is a condition which appears as a white stain on some colored concrete and masonry products. It is a common occurrence in new concrete, created by sodium and sulfate compounds of several hydroxides, minerals, chlorides and nitrates which deposit on the surface and pores. It is the result of moisture evaporation and is most common on darker colored pavers and fabricated surfaces.

Water (rain, humidity, or ground water which "wicks") penetrates the pavers and dissolves latent salt. Sun draws the salt in solution to the surface and as moisture evaporates it is deposited on the surface. Efflorescence clears up as paver's age and eventually dissipates. The length of time varies with weather conditions and wear. Efflorescence can also be caused when salts in the sub-base material wick up around and through the pavers and joints and deposit on the paver surface and sides.

Wausau Tile Warranty

Wausau Tile products are warranted to be free from defect in material and workmanship during manufacturing based on applicable industry standards. Warranty periods begin on delivery date of the warranted product and extend for the period listed below:

- Precast terrazzo products are warranted for two years.
- Terrazzo tile, plastic and metal pieces are warranted for one year.
- Framing and aluminum products are warranted for two years.
- Powder coating is warranted for two years.
- Thermo-plastic coating is warranted for five years.
- Concrete site furnishings are warranted for two years.
- Pavers are warranted for three years if properly installed according to both project specifications and Wausau Tile installation recommendations. Placing pavers on non-Wausau Tile pedestals voids this LIMITED WARRANTY.